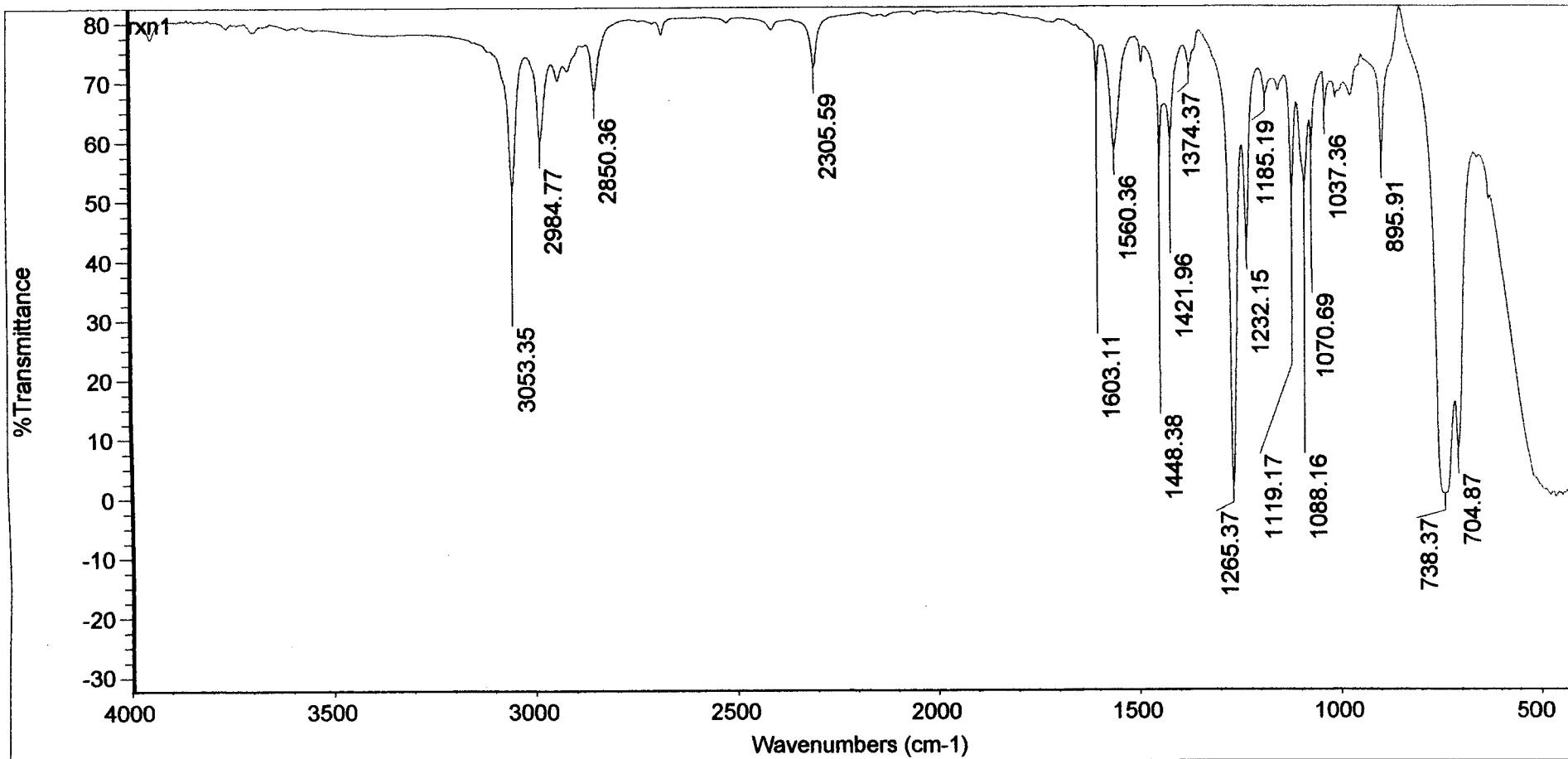


Wed Mar 23 13:36:00 2005 (GMT-05:00)

FIND PEAKS:

Spectrum: rxn1-nujol
 Region: 3999.84 399.21
 Absolute threshold: 54.272
 Sensitivity: 50
 Peak list:

Position:	722.21	Intensity:	18.658
Position:	763.67	Intensity:	40.427
Position:	891.01	Intensity:	42.783
Position:	969.89	Intensity:	37.976
Position:	1034.48	Intensity:	42.207
Position:	1077.87	Intensity:	39.033
Position:	1118.40	Intensity:	39.623
Position:	1157.91	Intensity:	38.166



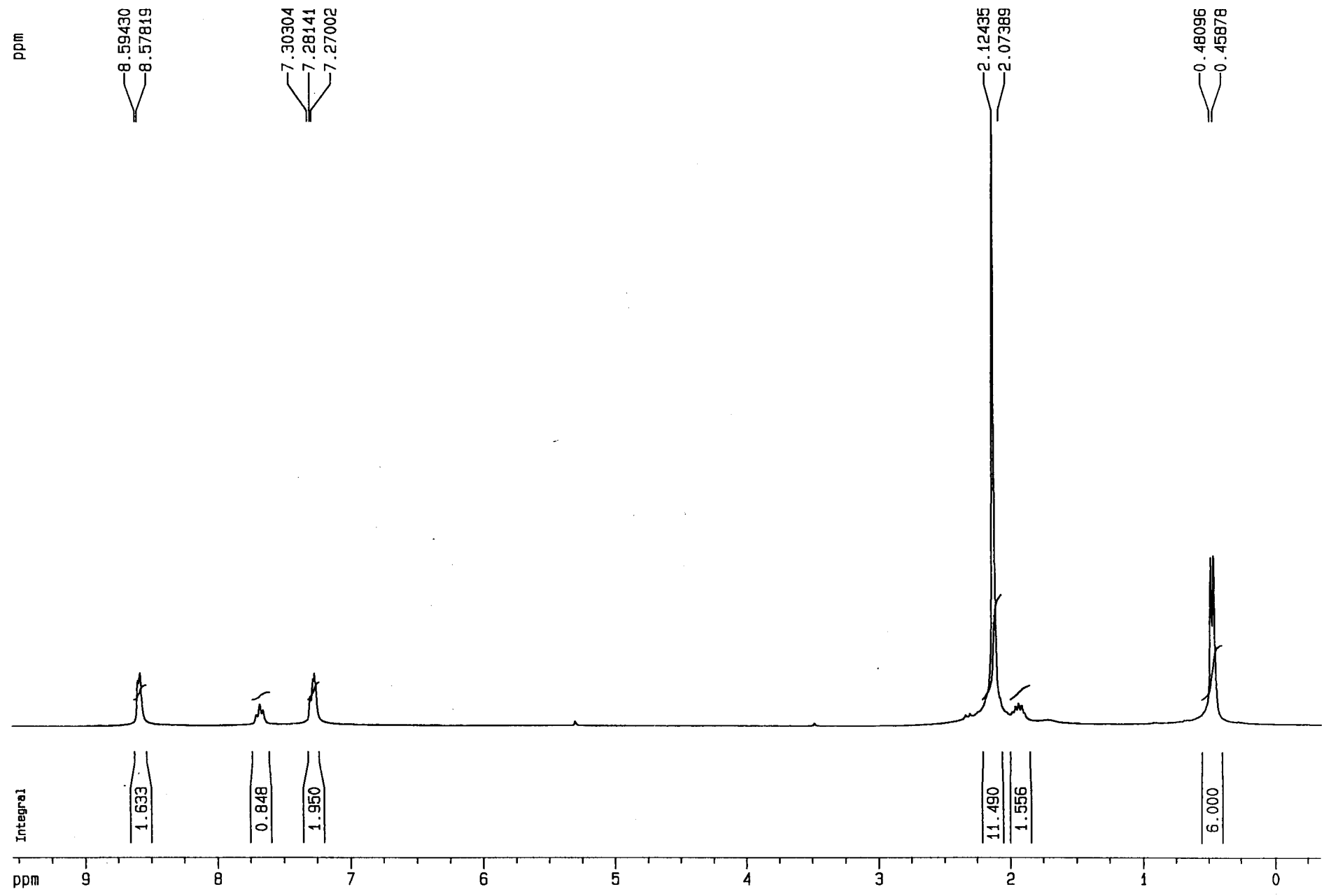
Wed Mar 23 11:10:16 2005 (GMT-05:00)

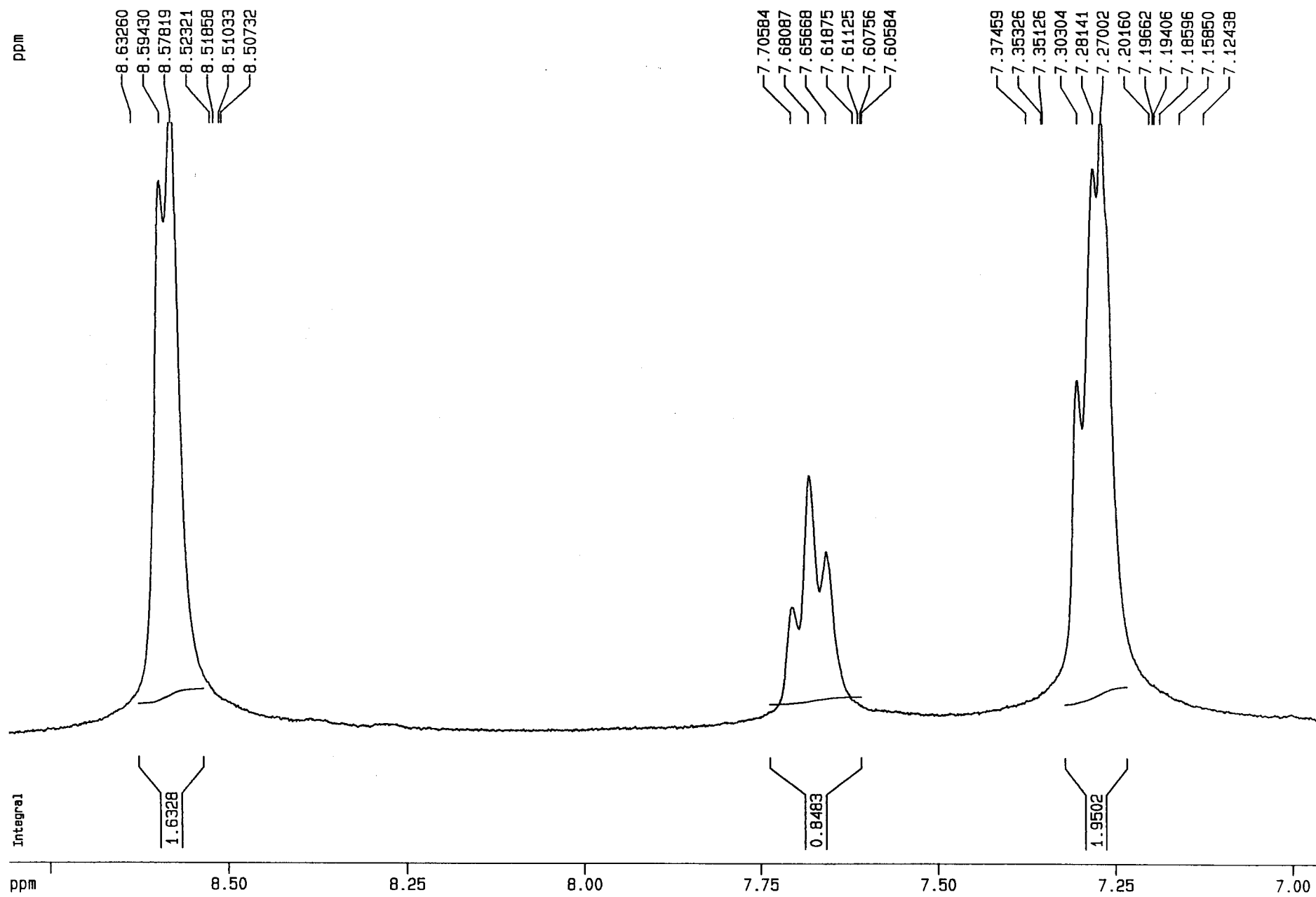
FIND PEAKS:

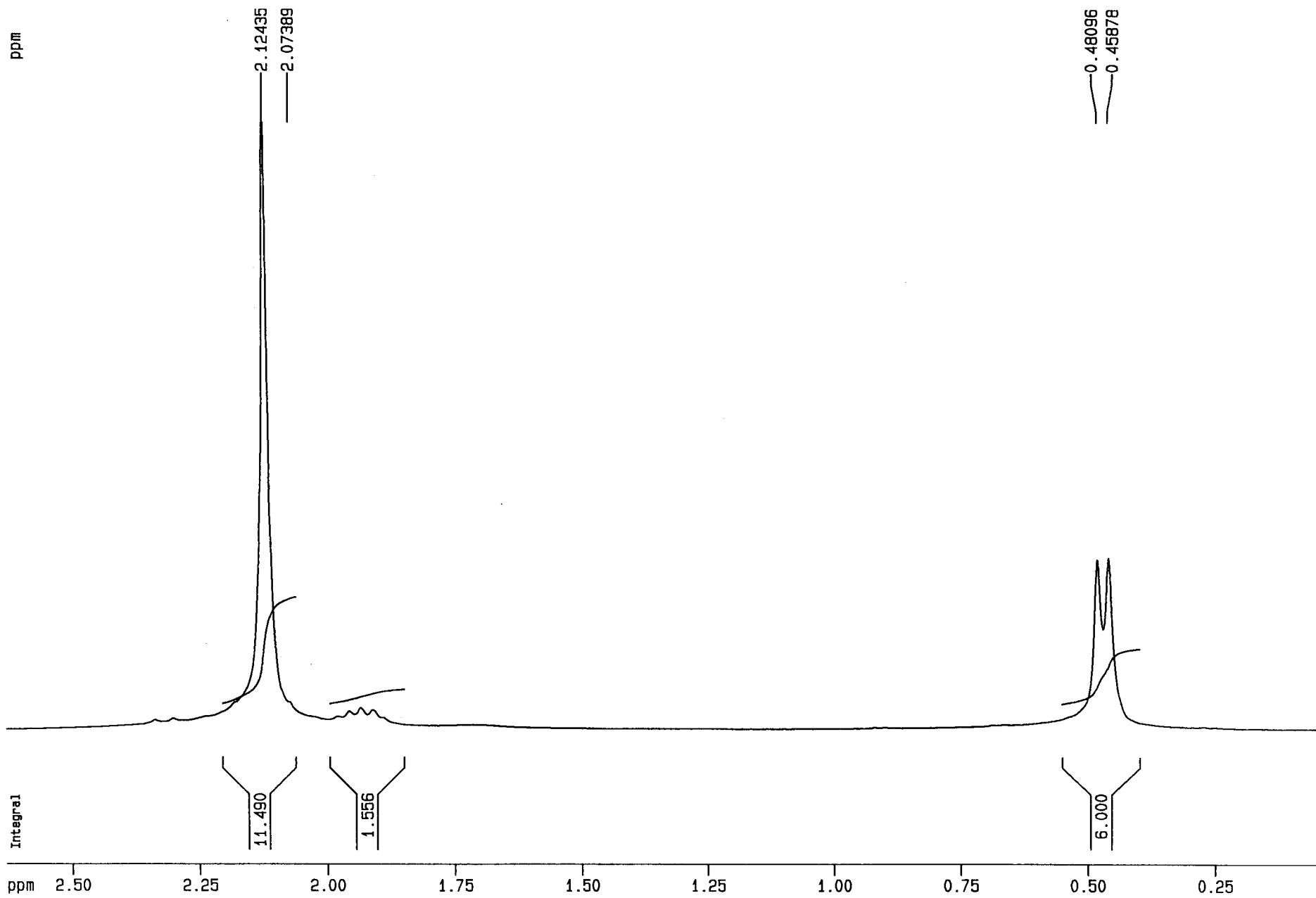
Spectrum: rxn1
Region: 4000.00 400.00
Absolute threshold: 74.795
Sensitivity: 50
Peak list:

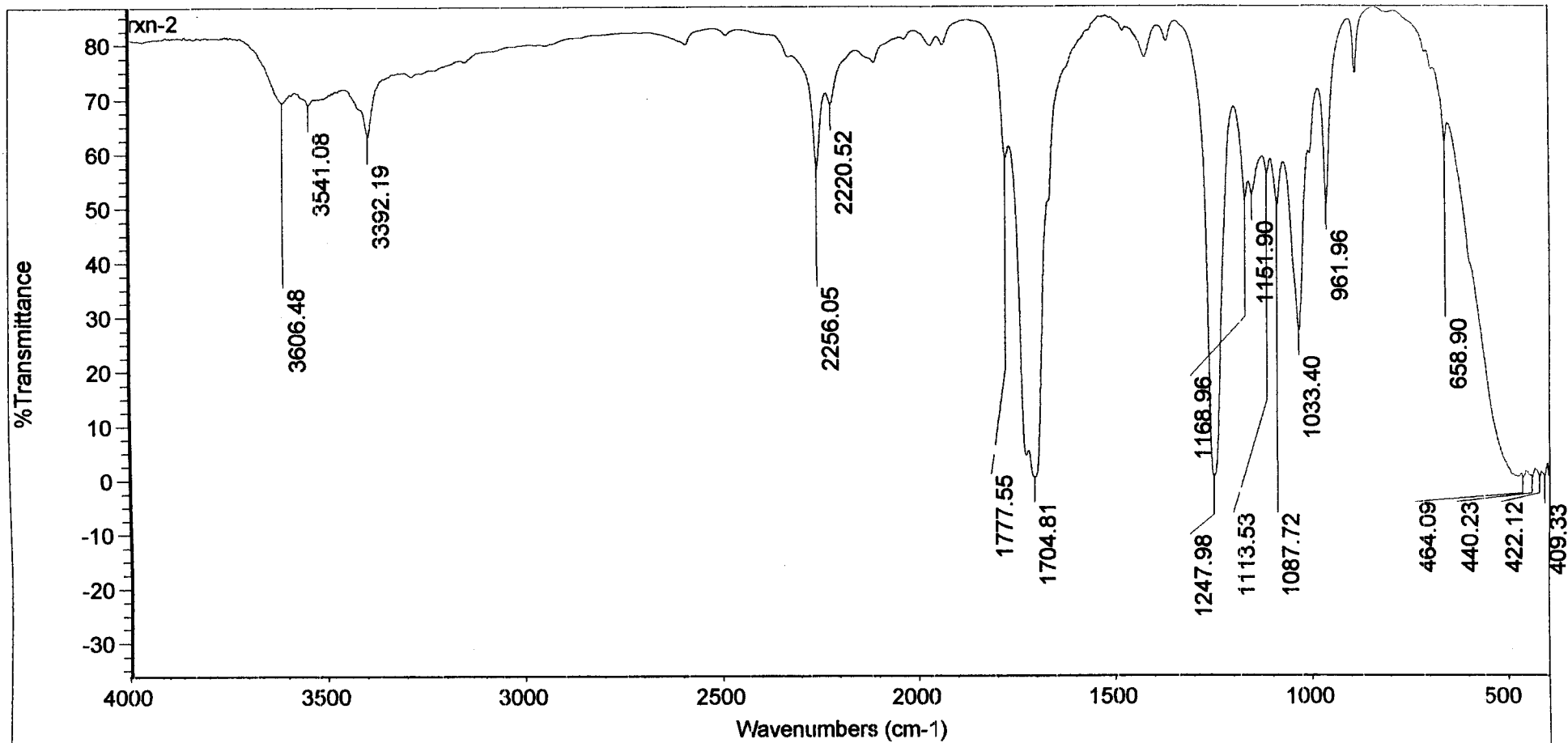
Position:	704.87	Intensity:	8.015
Position:	738.37	Intensity:	0.466
Position:	895.91	Intensity:	57.471
Position:	1037.36	Intensity:	65.244
Position:	1070.69	Intensity:	58.251
Position:	1088.16	Intensity:	52.838
Position:	1119.17	Intensity:	51.730
Position:	1185.19	Intensity:	67.652

Reaction 140 $\text{Co}[\text{CH}(\text{CH}_3)_2](\text{dmgH})_2$ (ps) - CDCl_3









Wed Mar 23 14:24:35 2005 (GMT-05:00)

FIND PEAKS:

Spectrum: rxn-2
 Region: 4000.00 400.00
 Absolute threshold: 71.391
 Sensitivity: 72
 Peak list:

Position:	Intensity:
409.33	0.0751
422.12	0.313
440.23	0.233
464.09	0.288
658.90	61.935
961.96	50.392
1033.40	27.234
1087.72	50.226