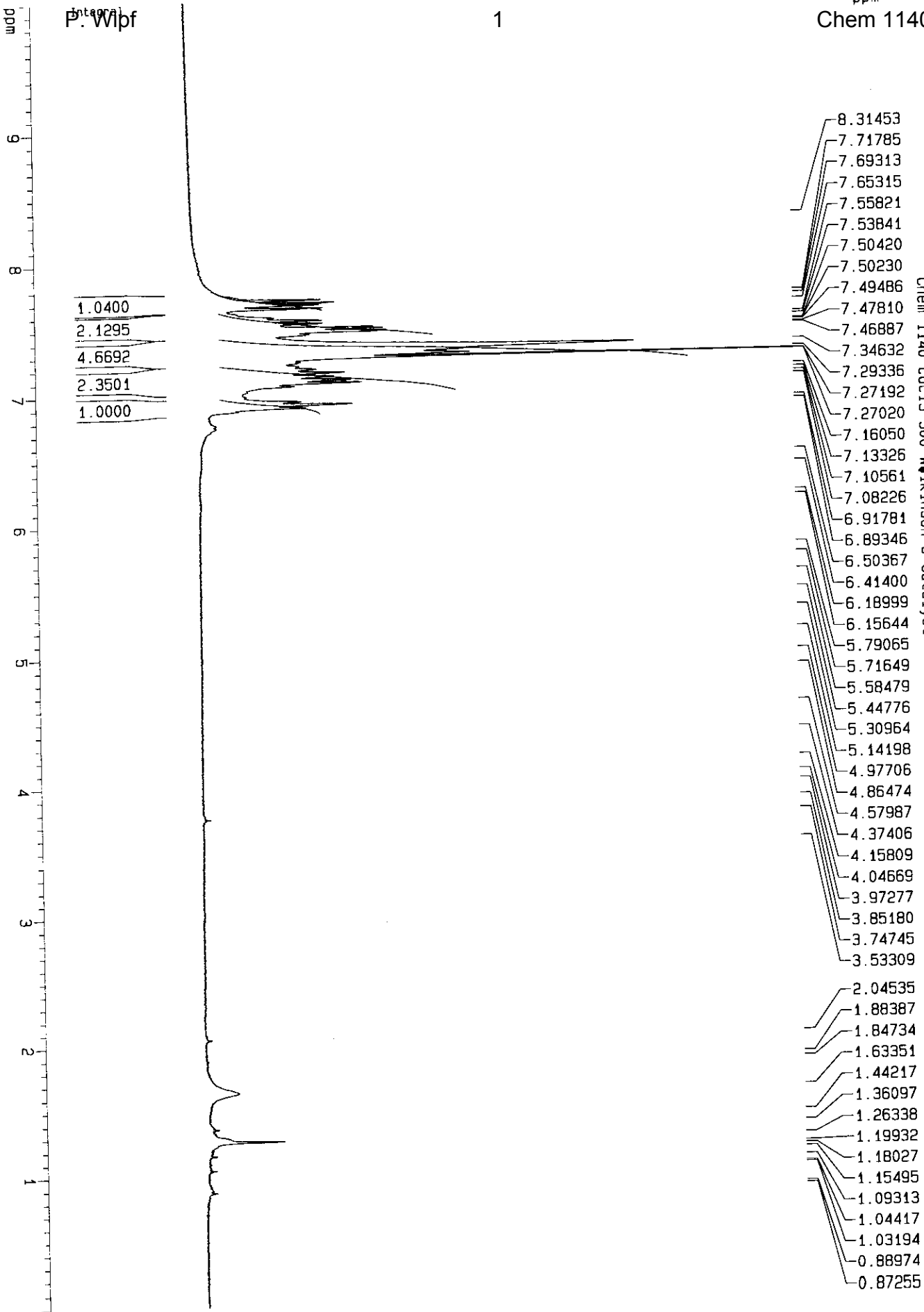


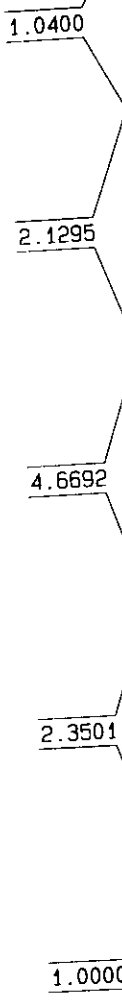
P. Wipf



Wilkinson's Catalyst

①

R. Wipf
Integral



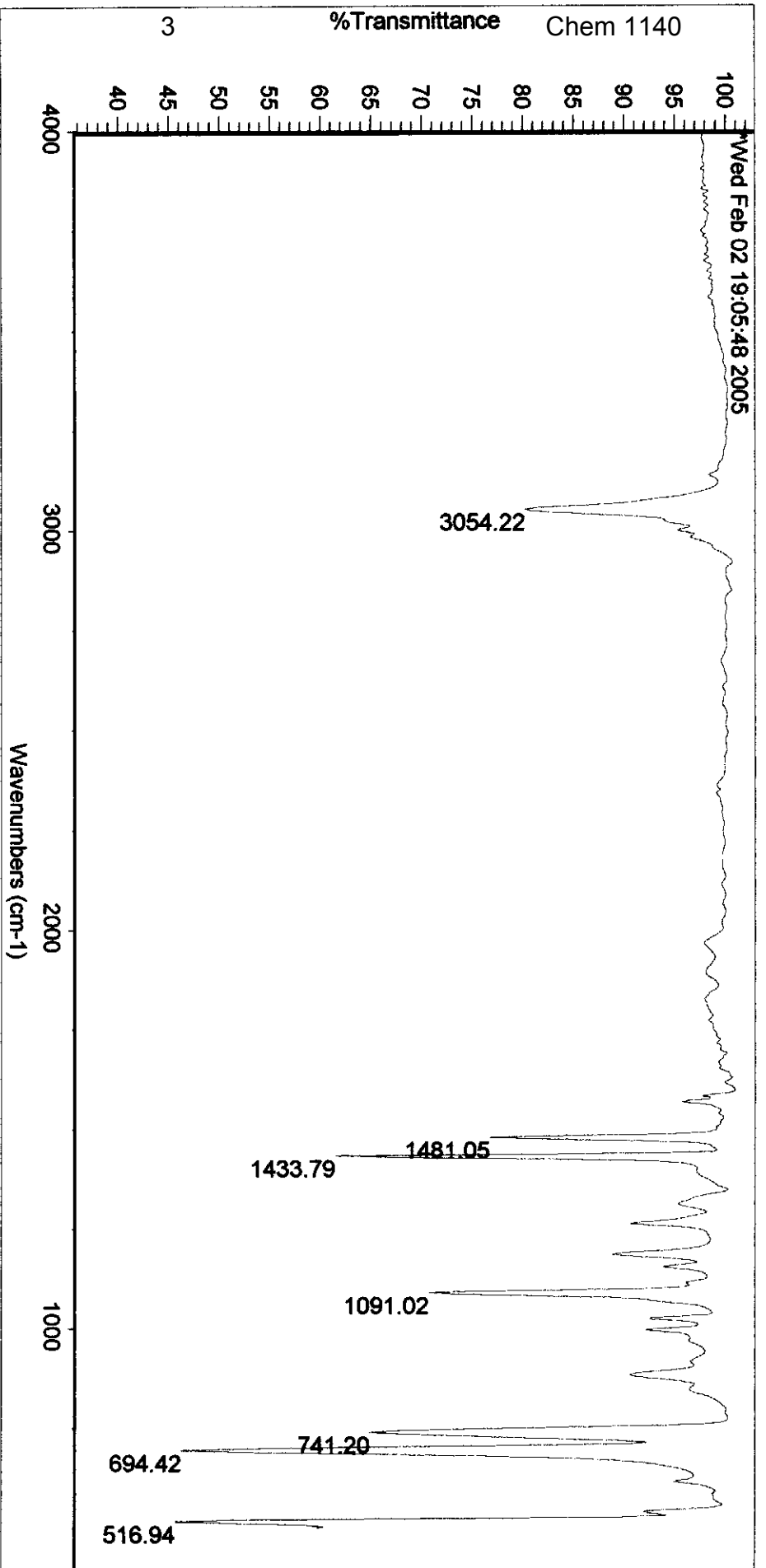
- 7.71785
- 7.69313
- 7.67815
- 7.65315
- 7.58264
- 7.56340
- 7.55821
- 7.53841
- 7.53589
- 7.50420
- 7.50230
- 7.49486
- 7.47810
- 7.46887
- 7.45651
- 7.45428
- 7.44912
- 7.44459
- 7.34632
- 7.29336
- 7.27192
- 7.27020
- 7.23971
- 7.23156
- 7.20657
- 7.18666
- 7.16050
- 7.13326
- 7.10561
- 7.08226
- 7.05723
- 6.98087
- 6.94073
- 6.91781
- 6.89346
- 6.87280
- 6.76431
- 6.73964

Chem 1140 cdcl3 300 W. Wilkinson's Catalyst

Wilkinson's Catalyst

②

P. Wipf



Wed Feb 02 19:07:40 2005

FIND PEAKS:

Spectrum:

*Wed Feb 02 19:05:48 2005

Region:

4000.00 400.00

Absolute threshold: 81.261

Sensitivity:

54

Peak list:

Position:	Intensity:
516.94	45.576
694.42	46.209
1433.79	61.443
741.20	64.854
1091.02	70.641
1481.05	76.668
3054.22	80.171

ppm

Integral
P. Wipf

4

ppm
Chem 71040

5.0000

7.4896

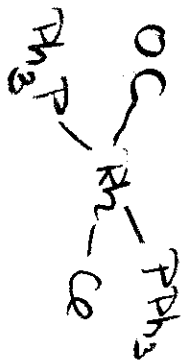
0.5696

0.9133

0.6553

- 9.56072
- 9.36700
- 8.30872
- 8.01040
- 7.76818
- 7.76228
- 7.74970
- 7.74435
- 7.73655
- 7.73234
- 7.72651
- 7.71868
- 7.70966
- 7.70051
- 7.44387
- 7.40598
- 7.40319
- 7.38287
- 7.36502
- 7.33674
- 7.27975
- 7.26958
- 6.94346
- 6.91860
- 6.73898
- 6.55731
- 6.39801
- 5.37619
- 5.31935
- 5.30929
- 5.25360
- 5.01116

Decarboxylation (CDCl3)



①

- 2.04571
- 1.61500
- 1.54680
- 1.26322
- 1.06895
- 0.97709
- 0.93661
- 0.88989
- 0.86611
- 0.57554
- 0.44835
- 0.31332
- 0.14576

ppm
8.2
8.0
7.8
7.6
7.4
7.2
7.0
6.8
6.6

Integral
P. Wipf

5

ppm
Chem 0140

- 8.30872
- 8.28029
- 8.25933
- 8.24020
- 8.20176
- 8.14312

8.01040

- 7.94314
- 7.76818
- 7.76228
- 7.74970
- 7.74435
- 7.73655
- 7.73234
- 7.72651
- 7.71868
- 7.70966
- 7.70051
- 7.65316
- 7.61551
- 7.55817
- 7.53435

- 7.46817
- 7.44387
- 7.40598
- 7.40319
- 7.38287
- 7.36502
- 7.33674
- 7.27975
- 7.26958
- 7.24164
- 7.22717
- 7.21265
- 7.20345
- 7.14752
- 7.10536

- 7.01875
- 6.98248
- 6.94346
- 6.91860

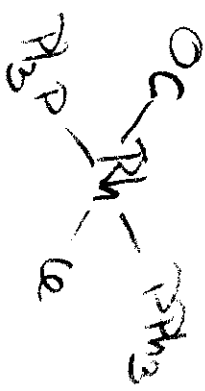
- 6.79819
- 6.73898
- 6.69462

- 6.59049
- 6.55731

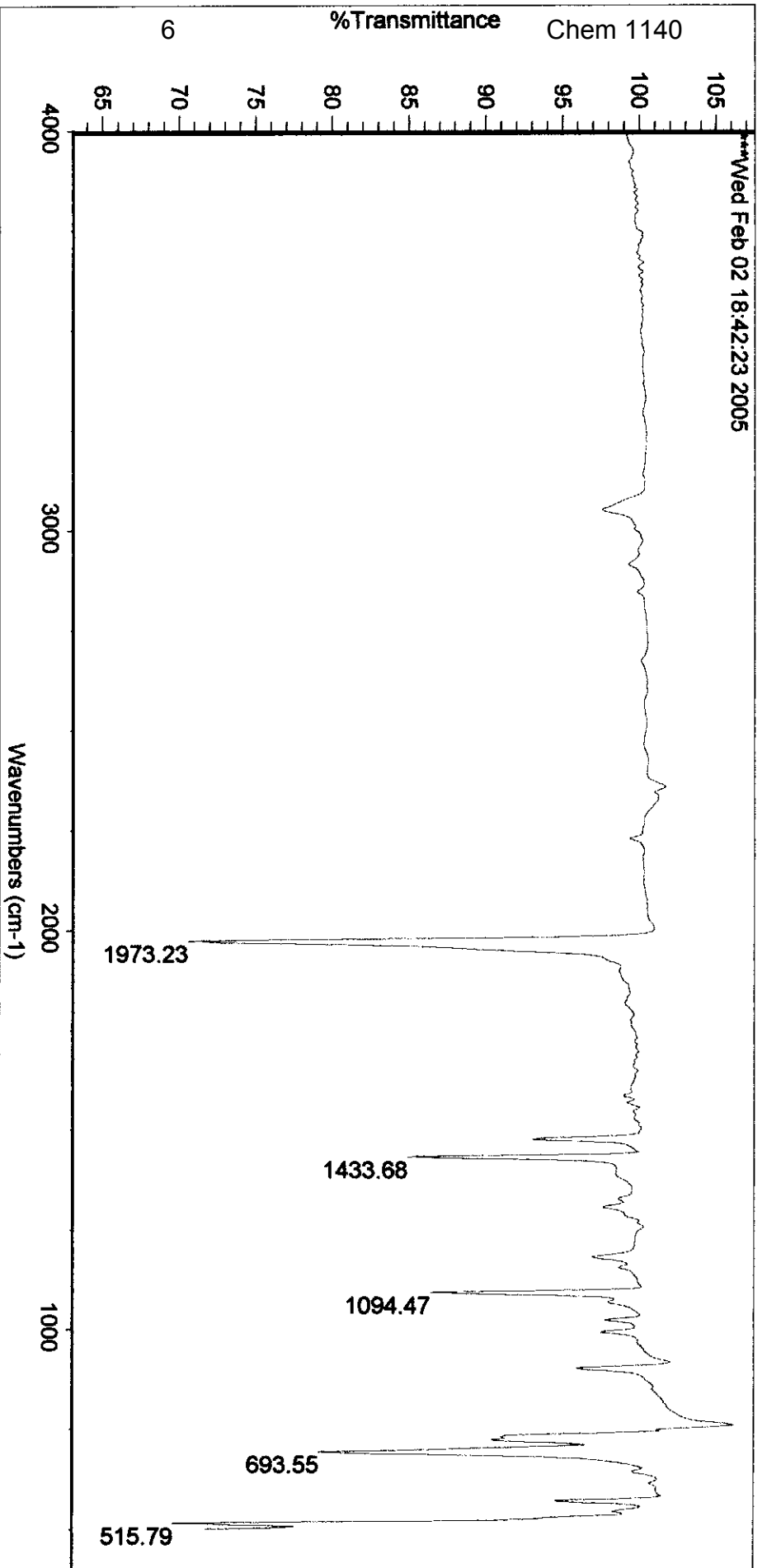
Decarbonylation (CDCl3)

5.0000

7.4896



(2)



Wed Feb 02 18:51:44 2005

FIND PEAKS:

Spectrum: ***Wed Feb 02 18:42:23 2005

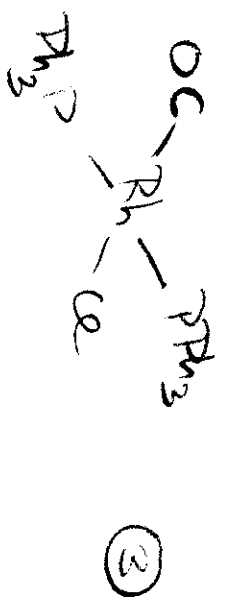
Region: 4000.00 400.00

Absolute threshold: 88.163

Sensitivity: 50

Peak list:

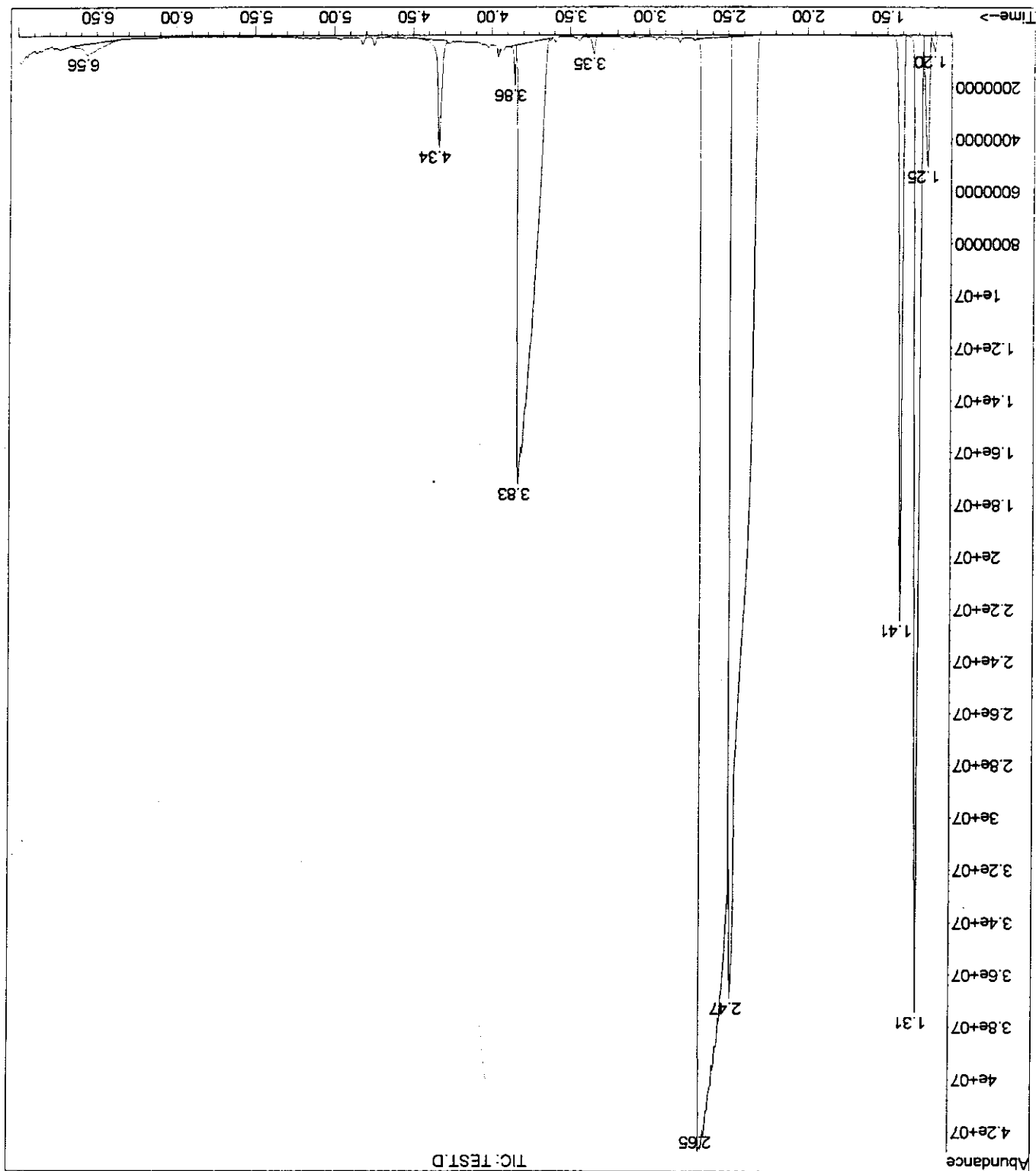
Position:	Intensity:
515.79	69.654
1973.23	70.581
693.55	79.154
1433.68	84.941
1094.47	86.403

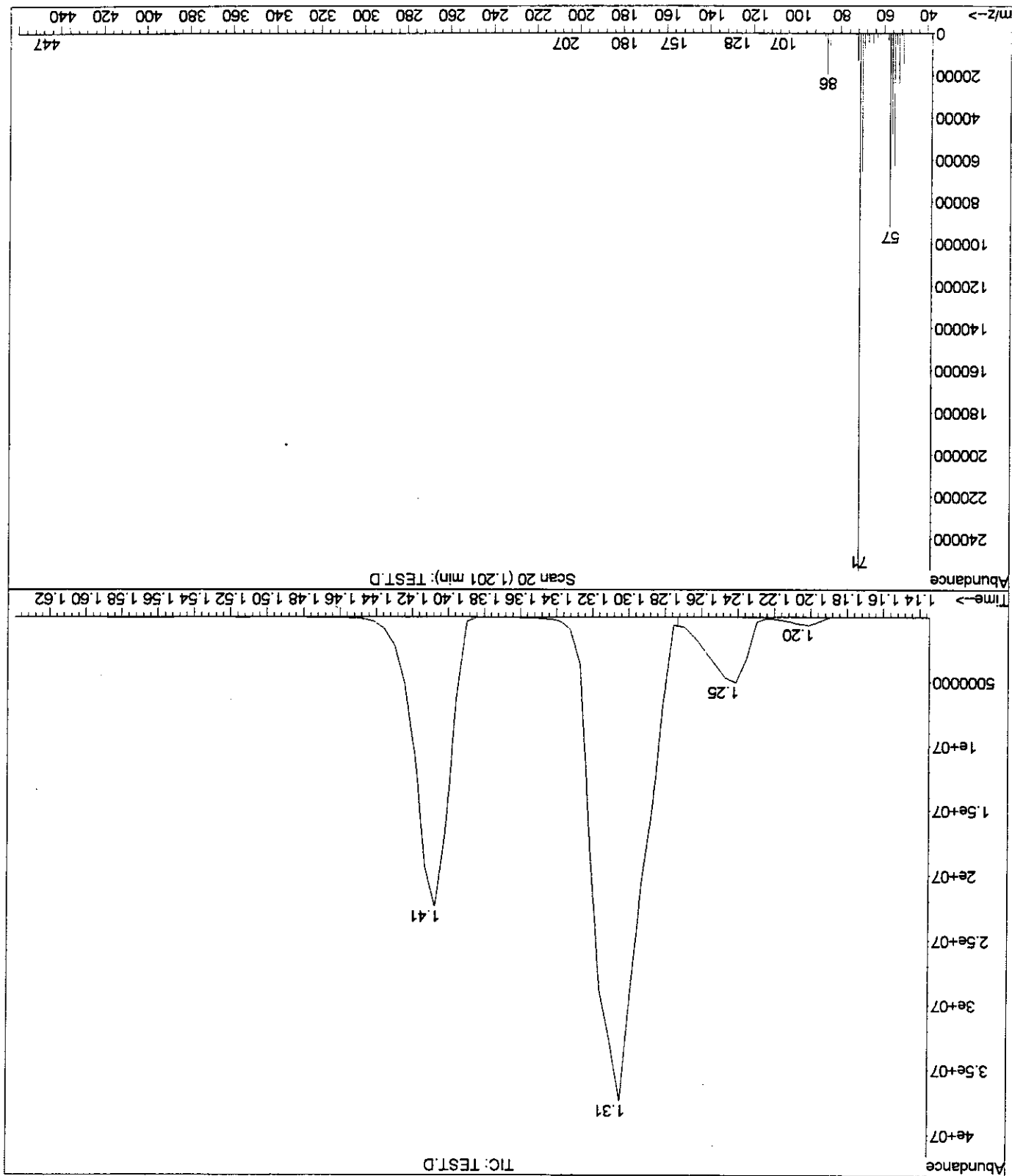


P. Wipf

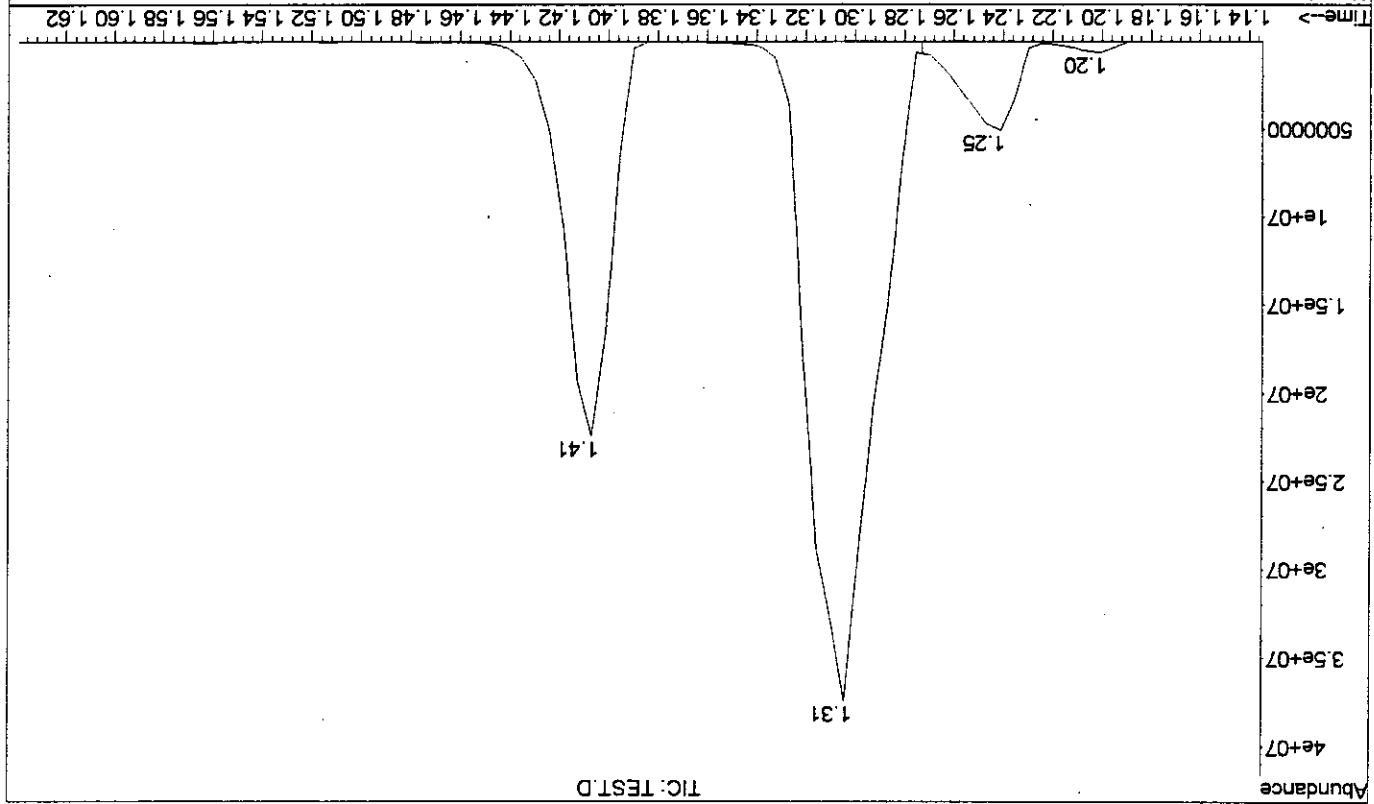
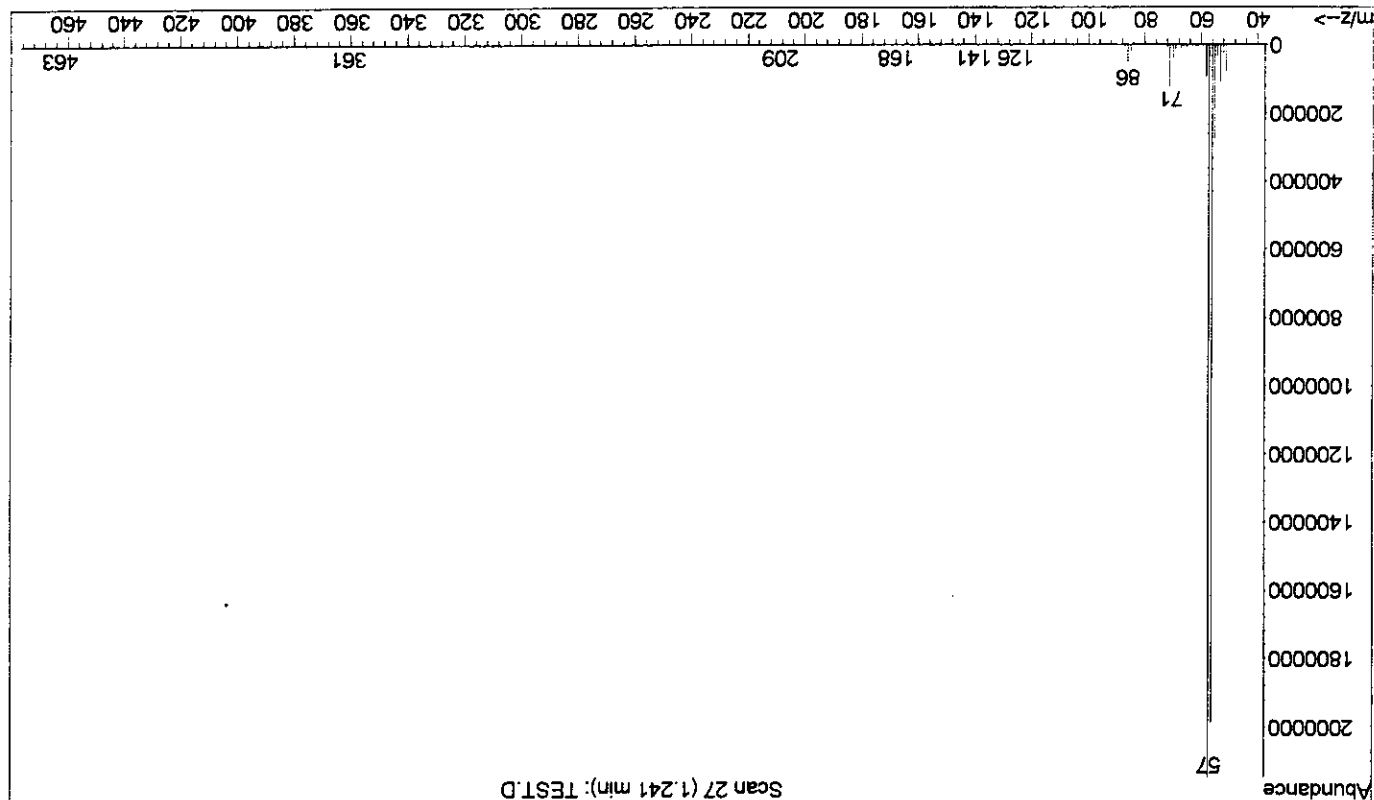
Area Percent Report

Data File : C:\HPCHEM\1\DATA\CHEM1140\TEST.D
 Acq On : 8 Feb 2005 10:24
 Sample : Kevin Hexanes
 Misc :
 MS Integration Params: autoint1.e
 Method : C:\HPCHEM\1\METHODS\CITRUS.M (Chemstation Integrator)
 Title :
 Vial: 1
 Operator: pw
 Inst : GC/MS Ins
 Multiplr: 1.00
 Sample Amount: 0.00

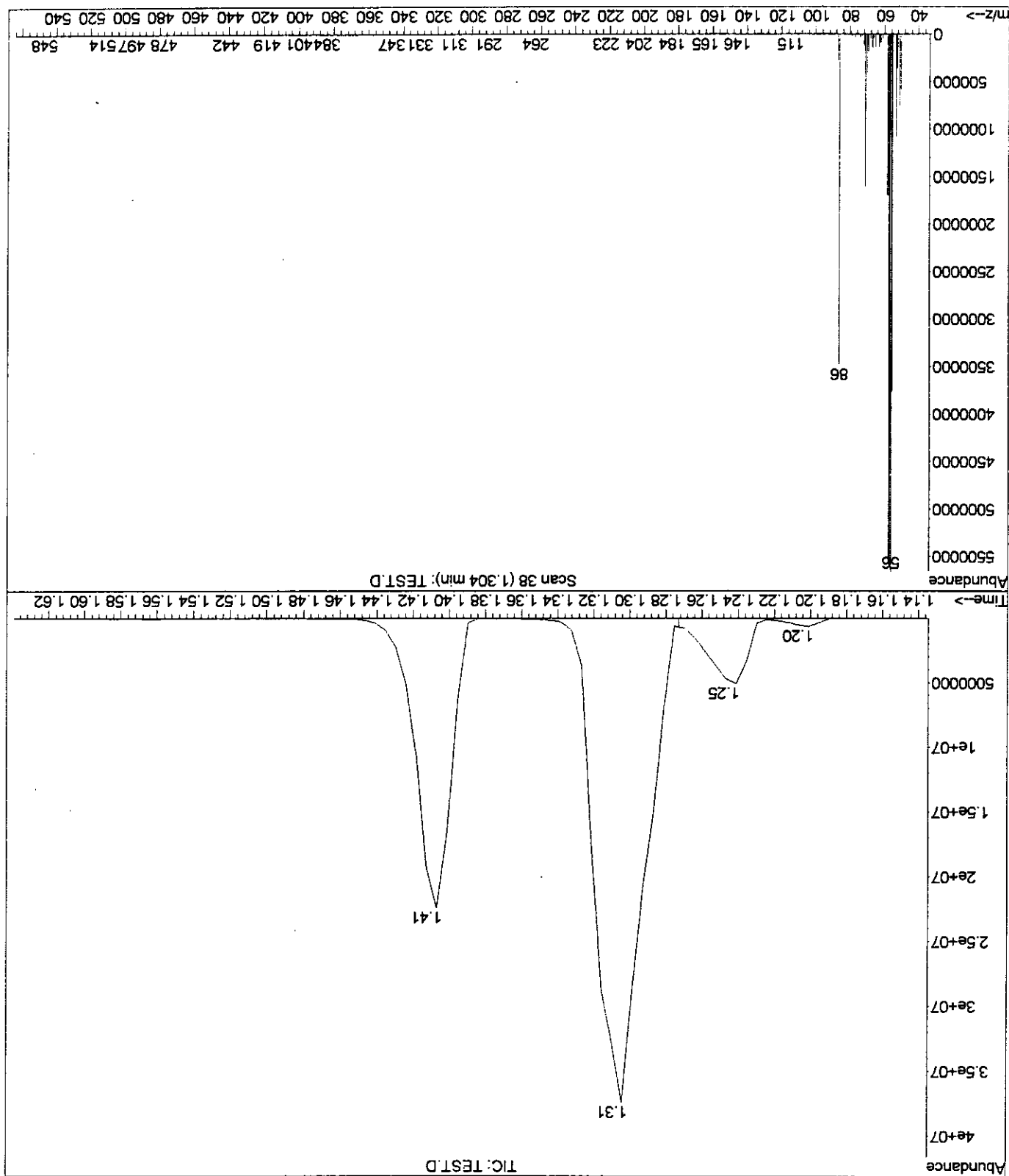




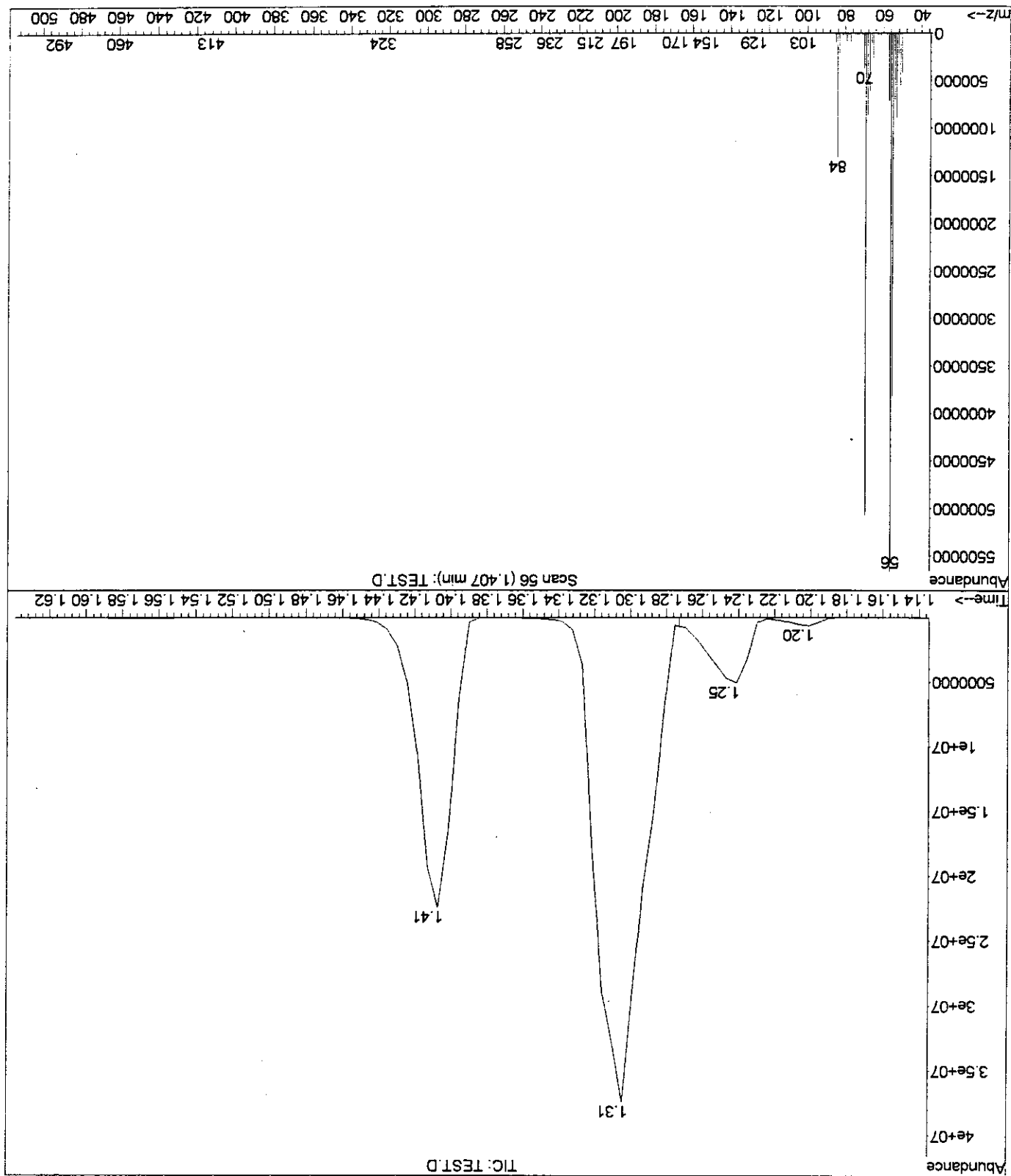
File : C:\HPCHEM\1\DATA\CHEM1140\TEST.D
Operator : pw
Acquired : 8 Feb 2005 10:24 using AcqMethod 1140_RH
Instrument : GC/MS Ins
Sample Name: Kevin Hexanes
Misc Info :
Vial Number: 1



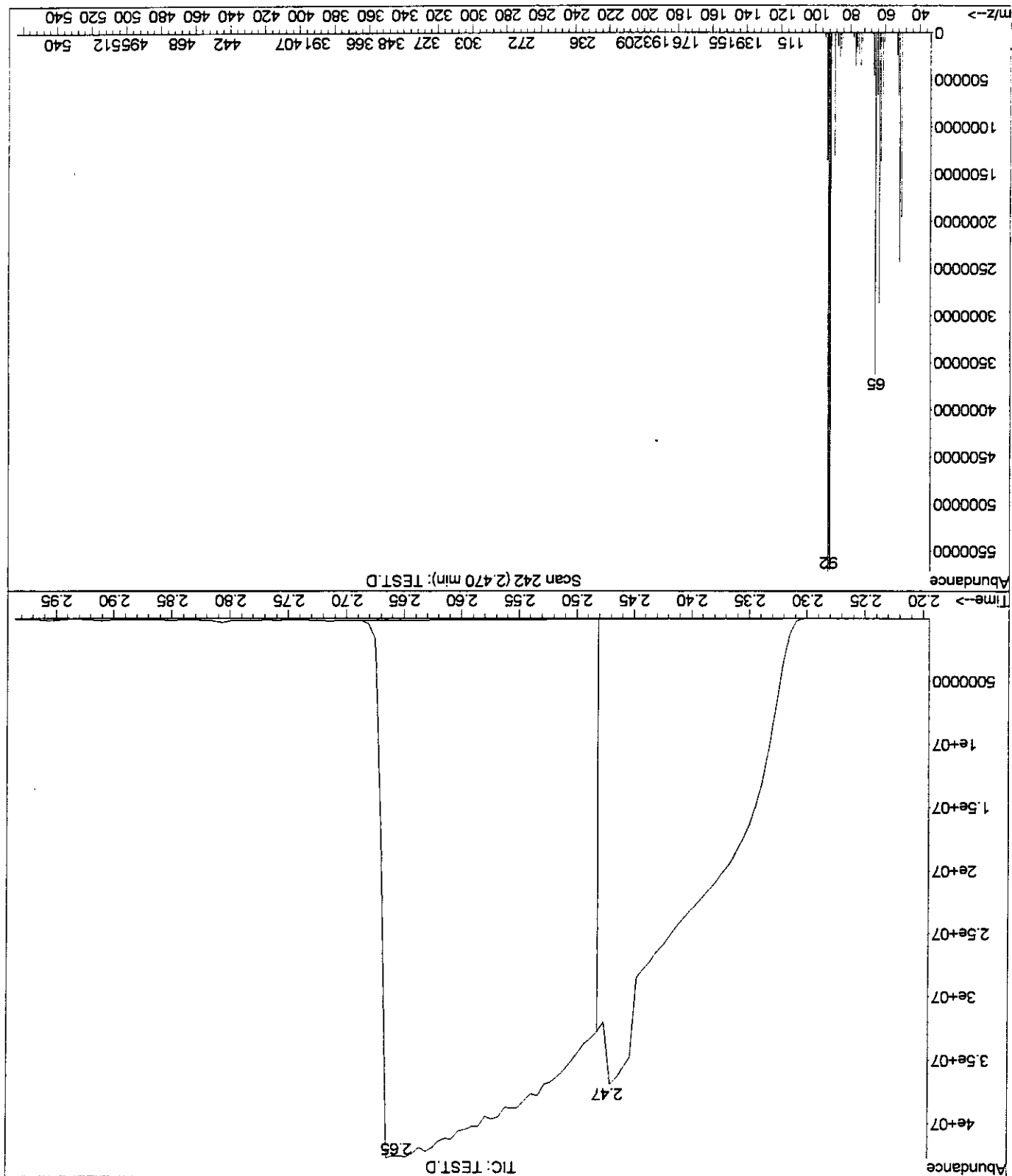
File : C:\HPCHEM\1\DATA\CHEM1140\TEST.D
Operator : pw
Acquired : 8 Feb 2005 10:24 using AcqMethod 1140_RH
Instrument : GC/MS Ins
Sample Name: Kevin Hexanes
Misc Info :
Vial Number: 1



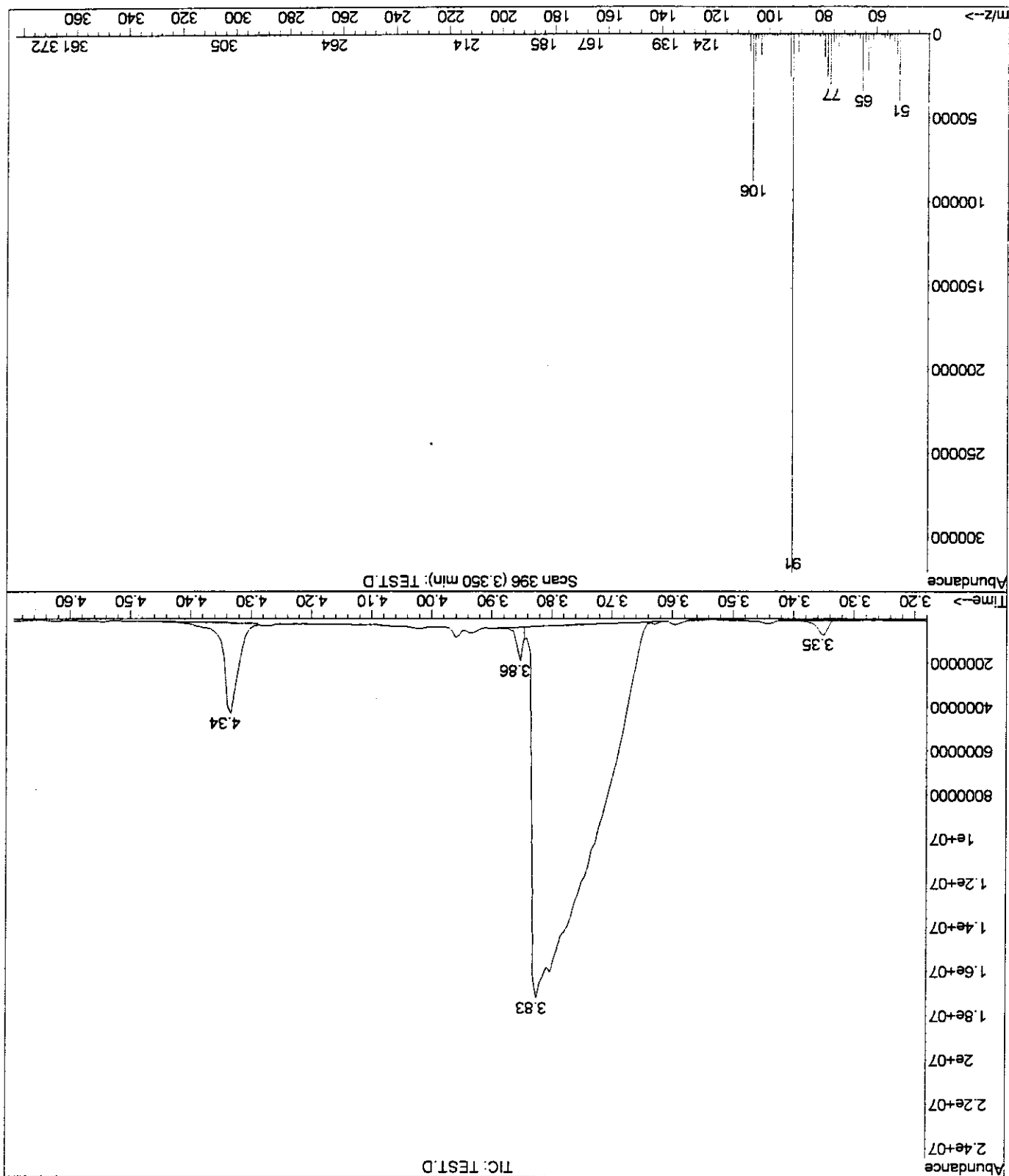
File : C:\HPCHEM\1\DATA\CHEM1140\TEST.D
Operator : pw
Acquired : 8 Feb 2005 10:24 using AcqMethod 1140_RH
Instrument : GC/MS Ins
Sample Name: Kevin Hexanes
Misc Info :
Vial Number: 1



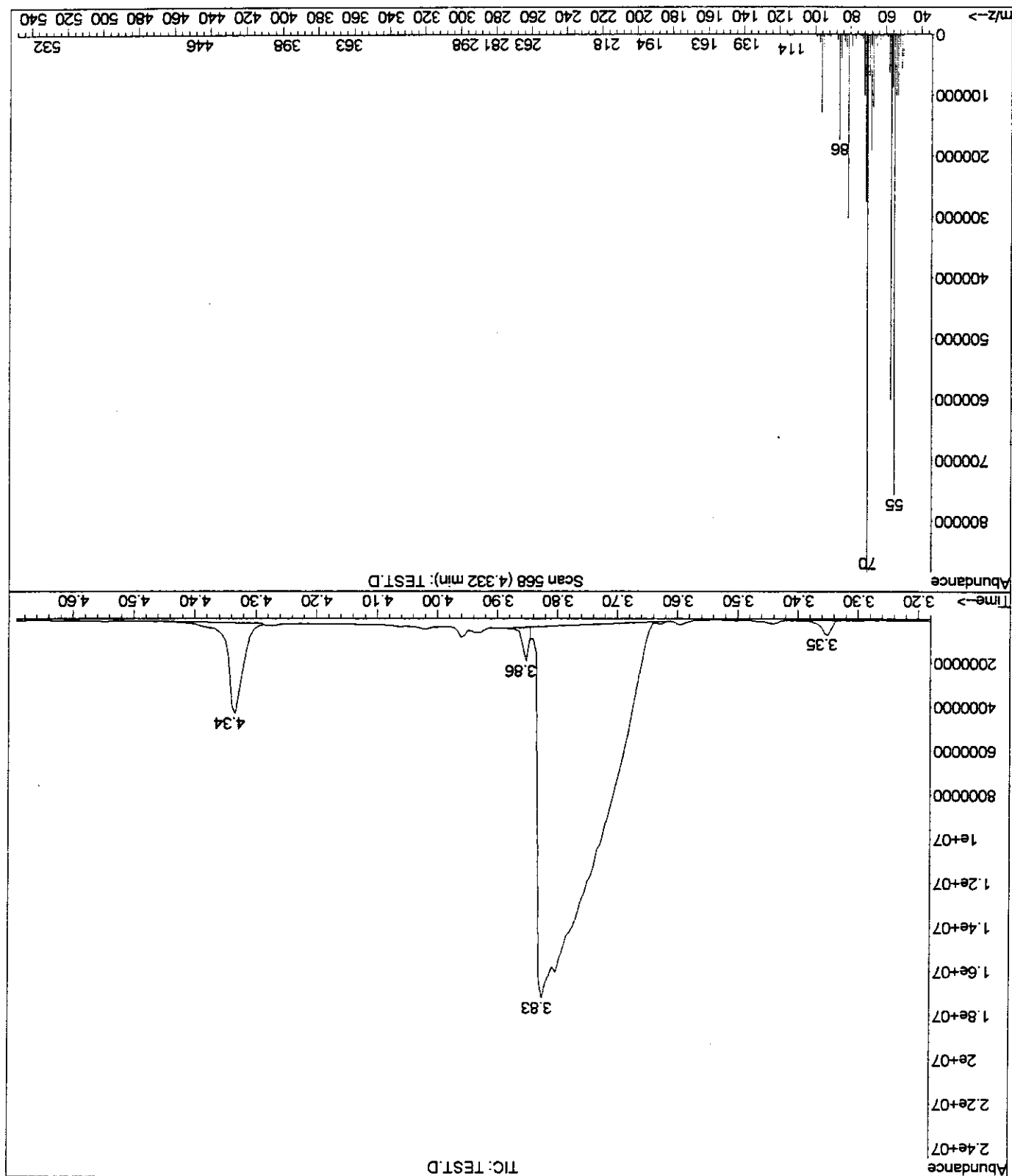
File : C:\HPCHEM\1\DATA\CHEM1140\TEST.D
Operator : pw
Acquired : 8 Feb 2005 10:24 using AcqMethod 1140_RH
Instrument : GC/MS Ins
Sample Name: Kevin Hexanes
Misc Info :
Vial Number: 1



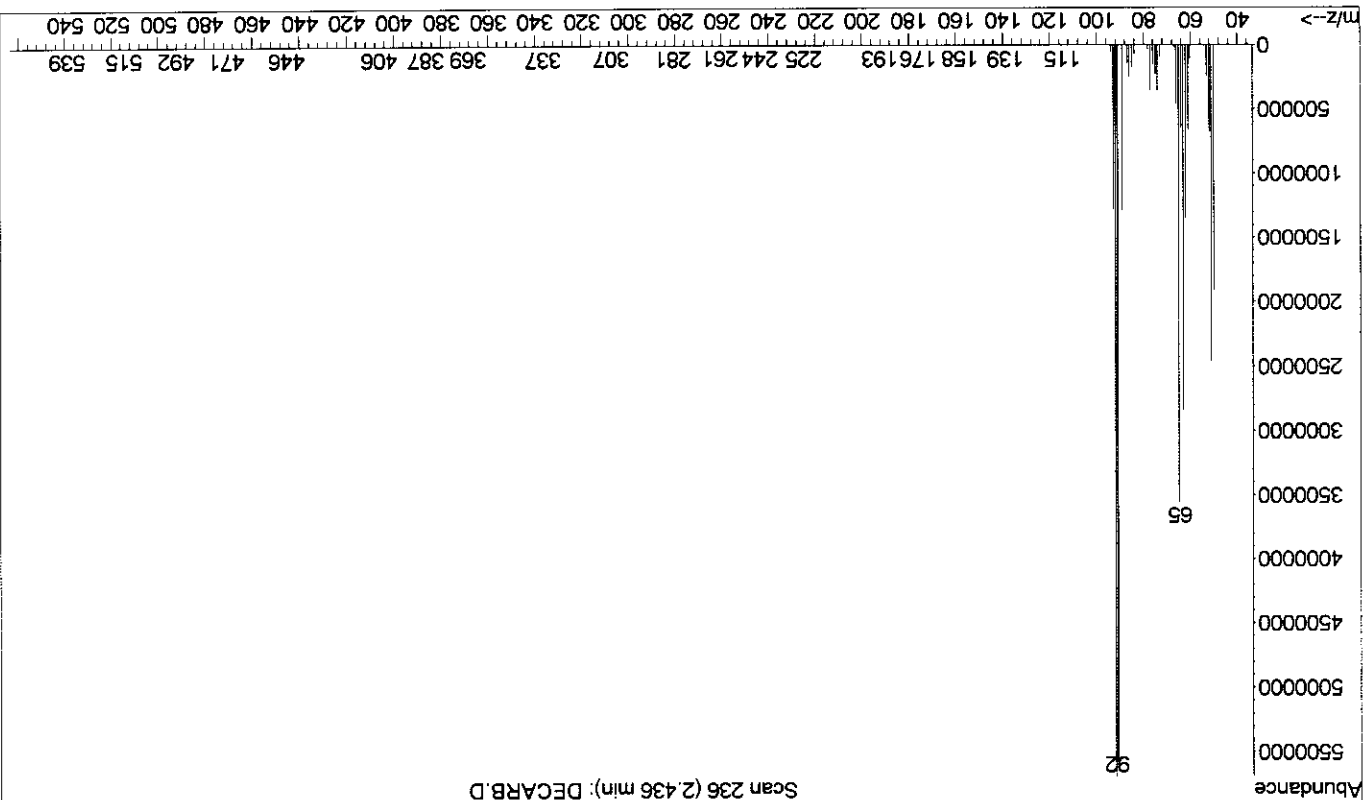
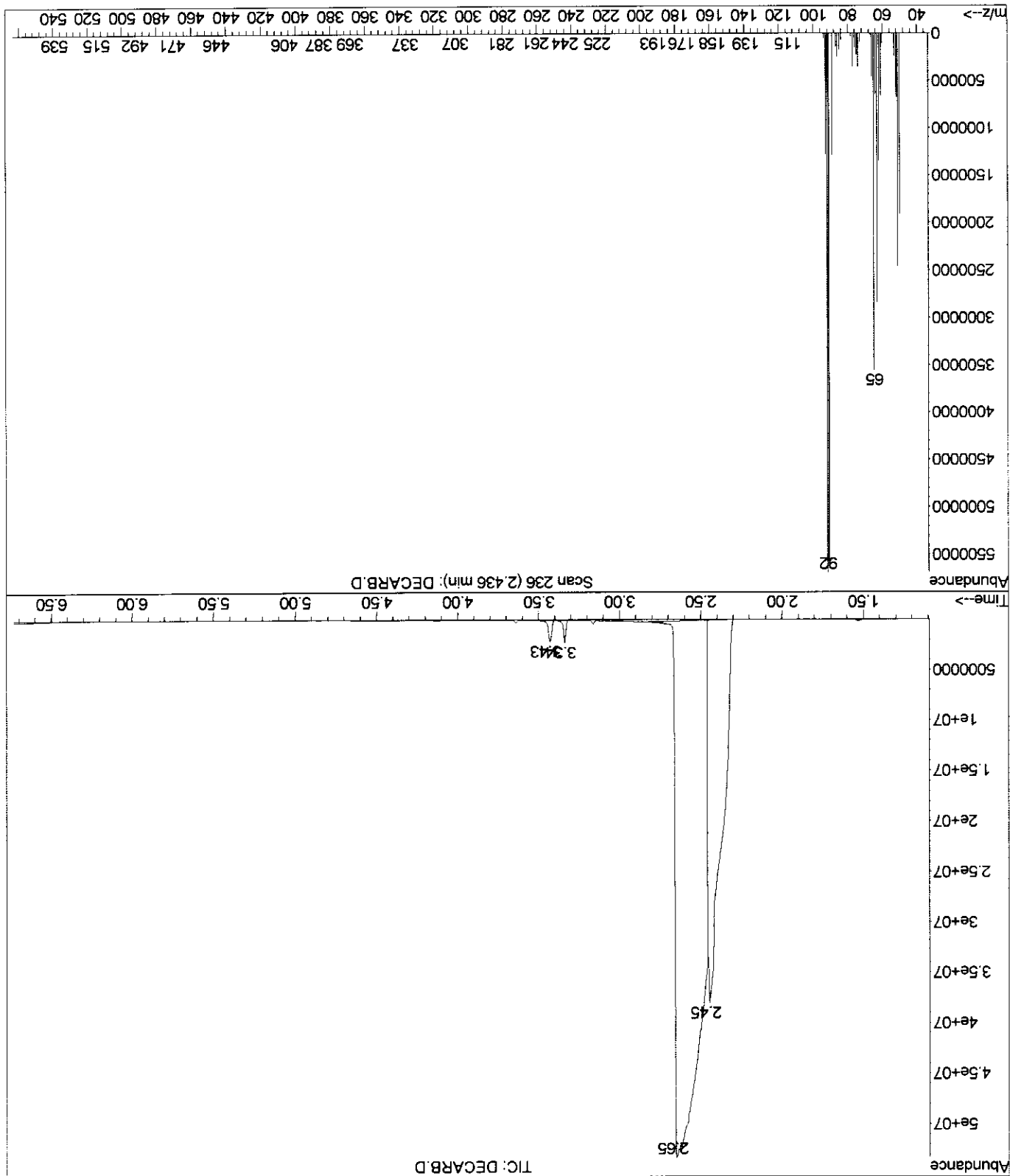
File : C:\HPCHEM\1\DATA\CHEM1140\TEST.D
Operator : pw
Acquired : 8 Feb 2005 10:24 using AcqMethod 1140_RH
Instrument : GC/MS Ins
Sample Name: Kevin Hexanes
Misc Info :
Vial Number: 1



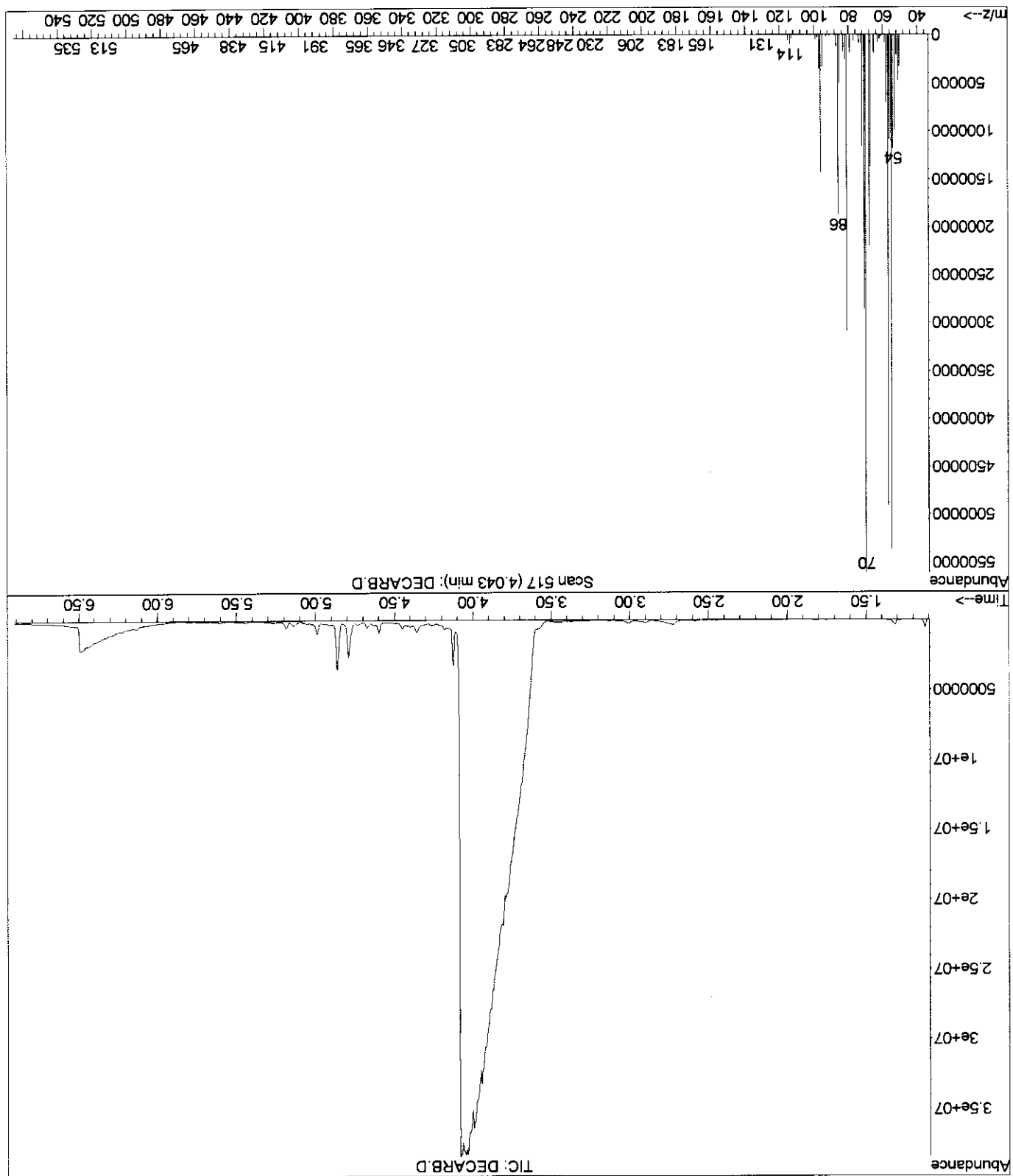
File : C:\HPCHEM\1\DATA\CHEM1140\TEST.D
Operator : pw
Acquired : 8 Feb 2005 10:24 using AcqMethod 1140_RH
Instrument : GC/MS Ins
Sample Name: Kevin Hexanes
Misc Info :
Vial Number: 1



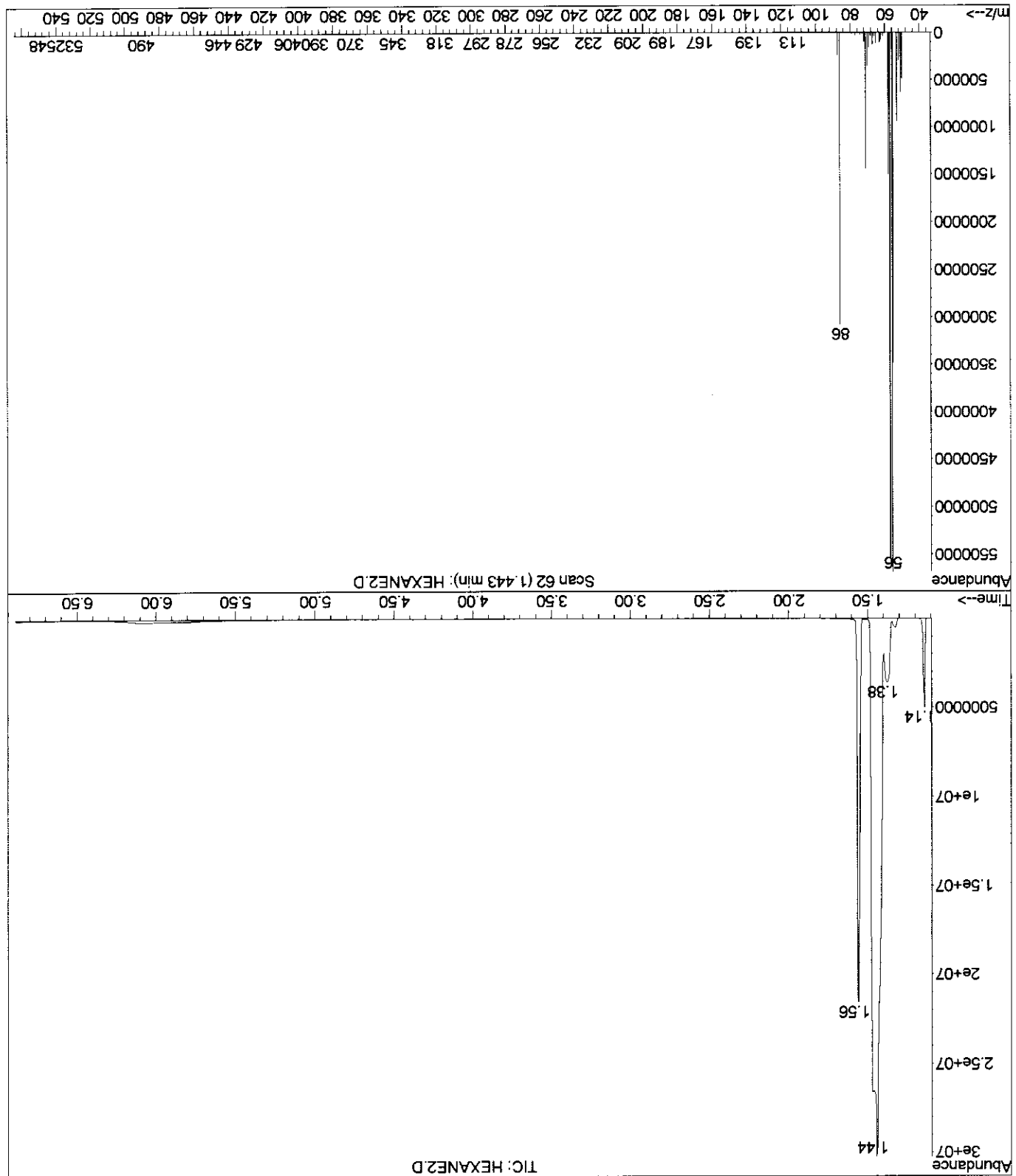
File : C:\HPCHEM\1\DATA\CHEM1140\TEST.D
Operator : pw
Acquired : 8 Feb 2005 10:24 using AcqMethod 1140_RH
Instrument : GC/MS Ins
Sample Name: Kevin Hexanes
Misc Info :
Vial Number: 1



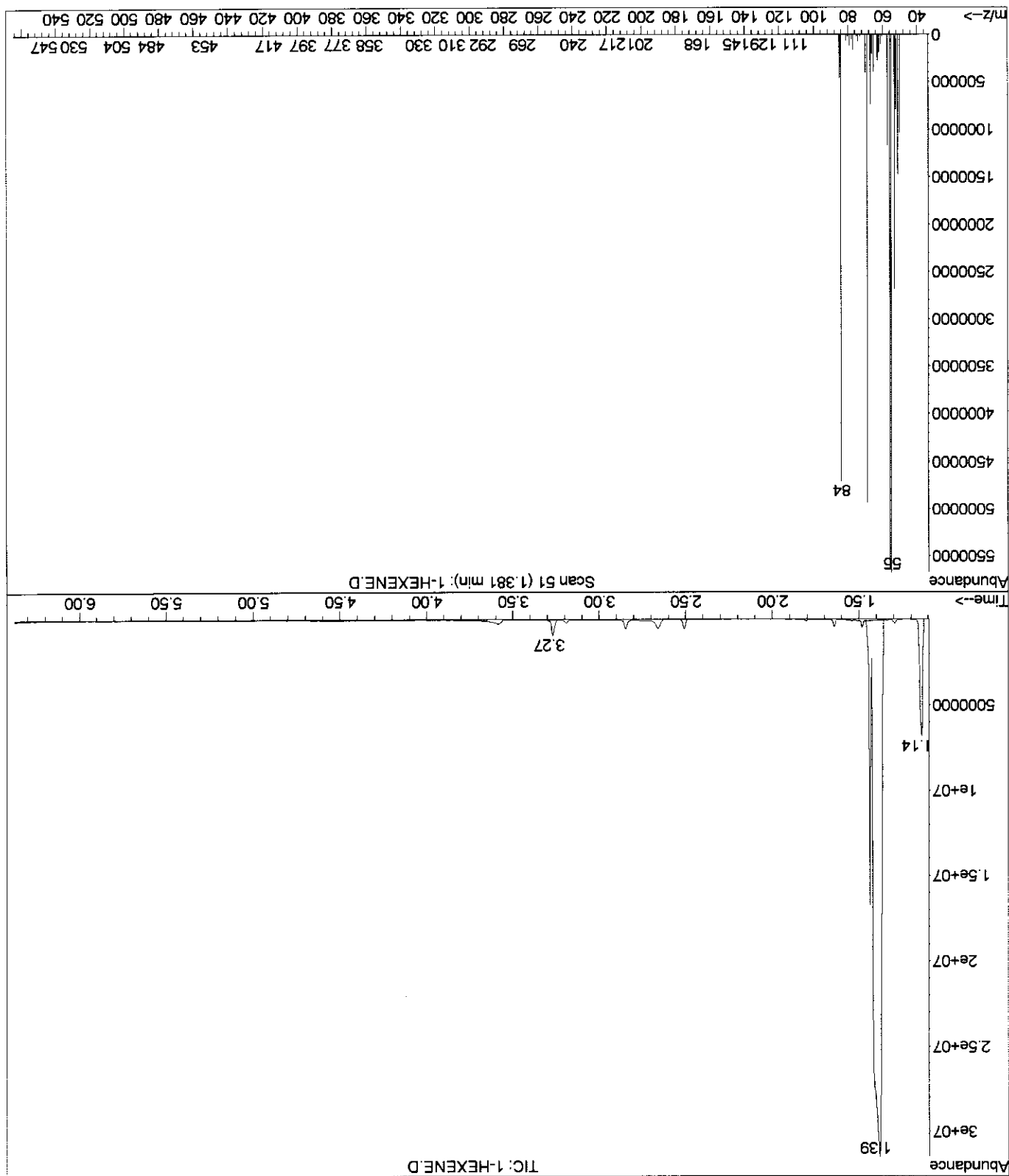
File : C:\HPCHEM\1\DATA\CHEM1140\DECARB.D
Operator : PW
Acquired : 4 Feb 2005 10:30 using AcqMethod 1140_RH
Instrument : GC/MS Ins
Sample Name: Toluene
Misc Info :
Vial Number: 1



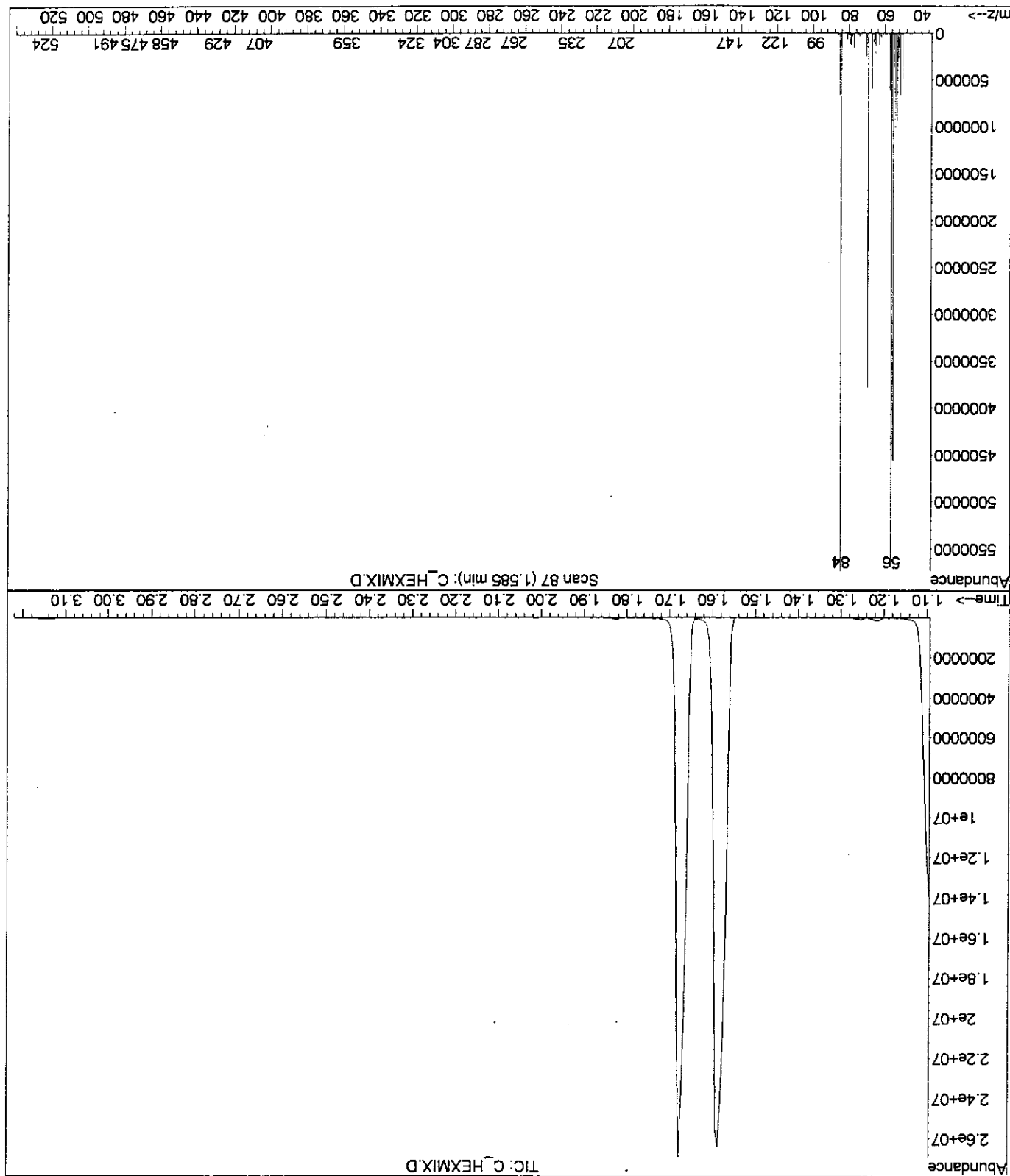
File : C:\HPCHEM\1\DATA\CHEM1140\DECARB.D
Operator : PW
Acquired : 4 Feb 2005 10:51 using AcqMethod 1140_RH
Instrument : GC/MS Ins
Sample Name: heptanal
Misc Info :
Vial Number: 1



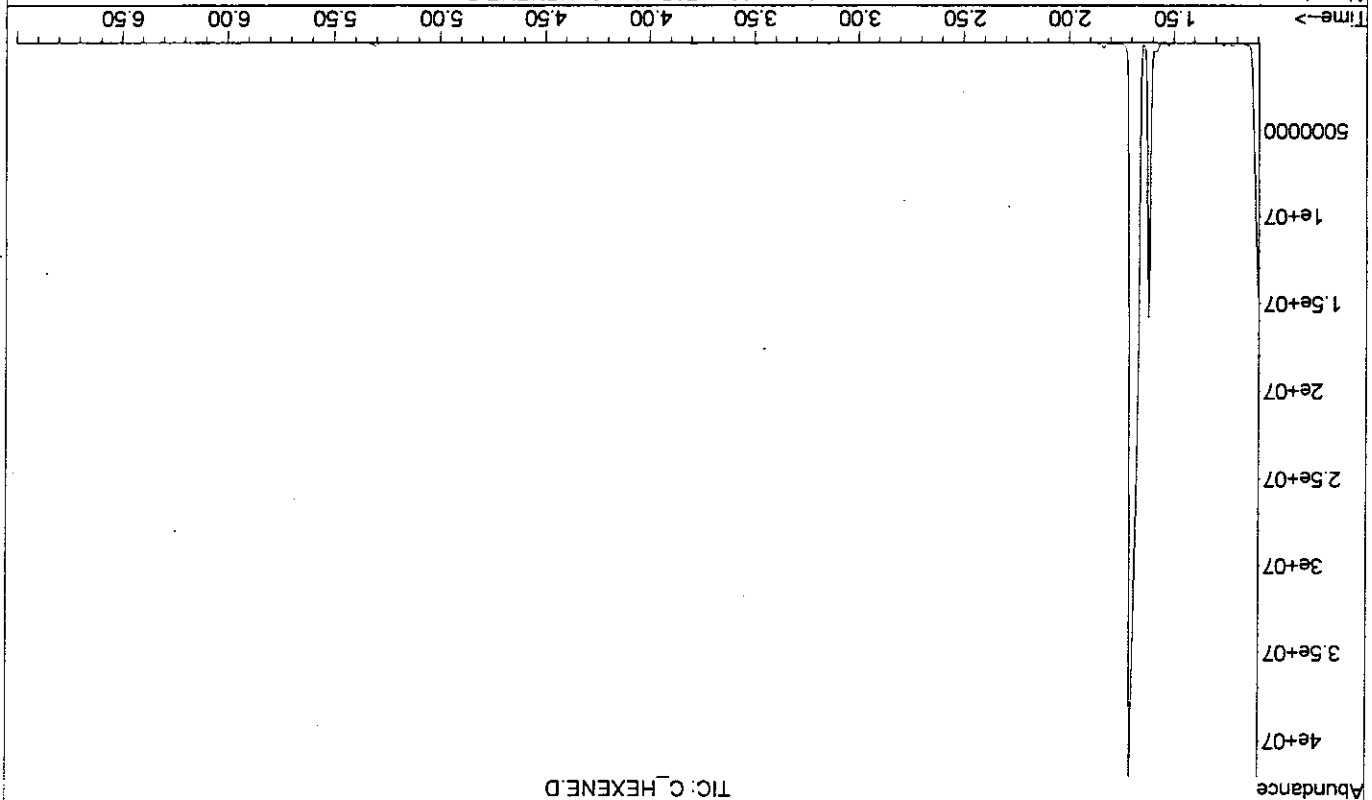
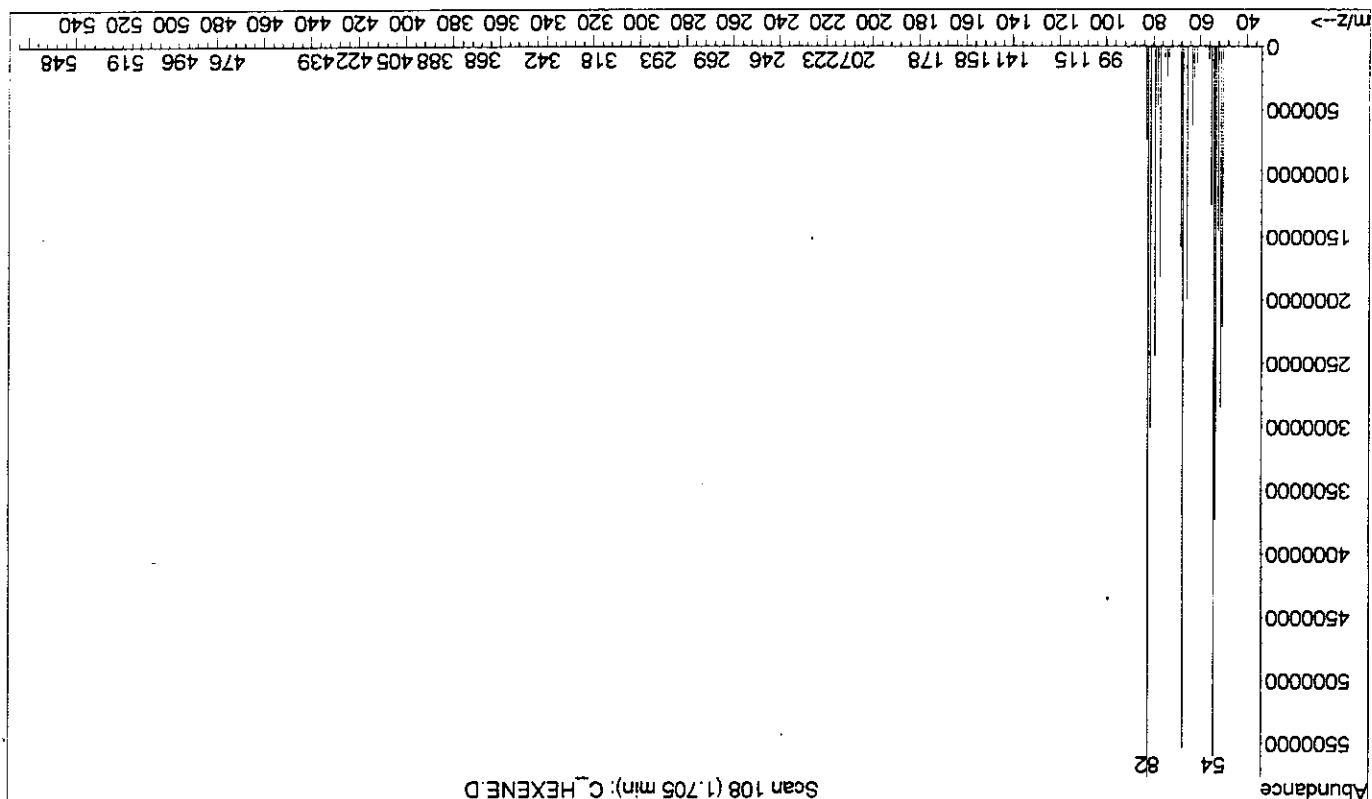
File : C:\HPCHEM\1\DATA\CHEM1140\HEXANE2.D
Operator : pw
Acquired : 8 Feb 2005 14:32 using AcqMethod 1140_RH
Instrument : GC/MS Ins
Sample Name: hexanes
Misc Info :
Vial Number: 1



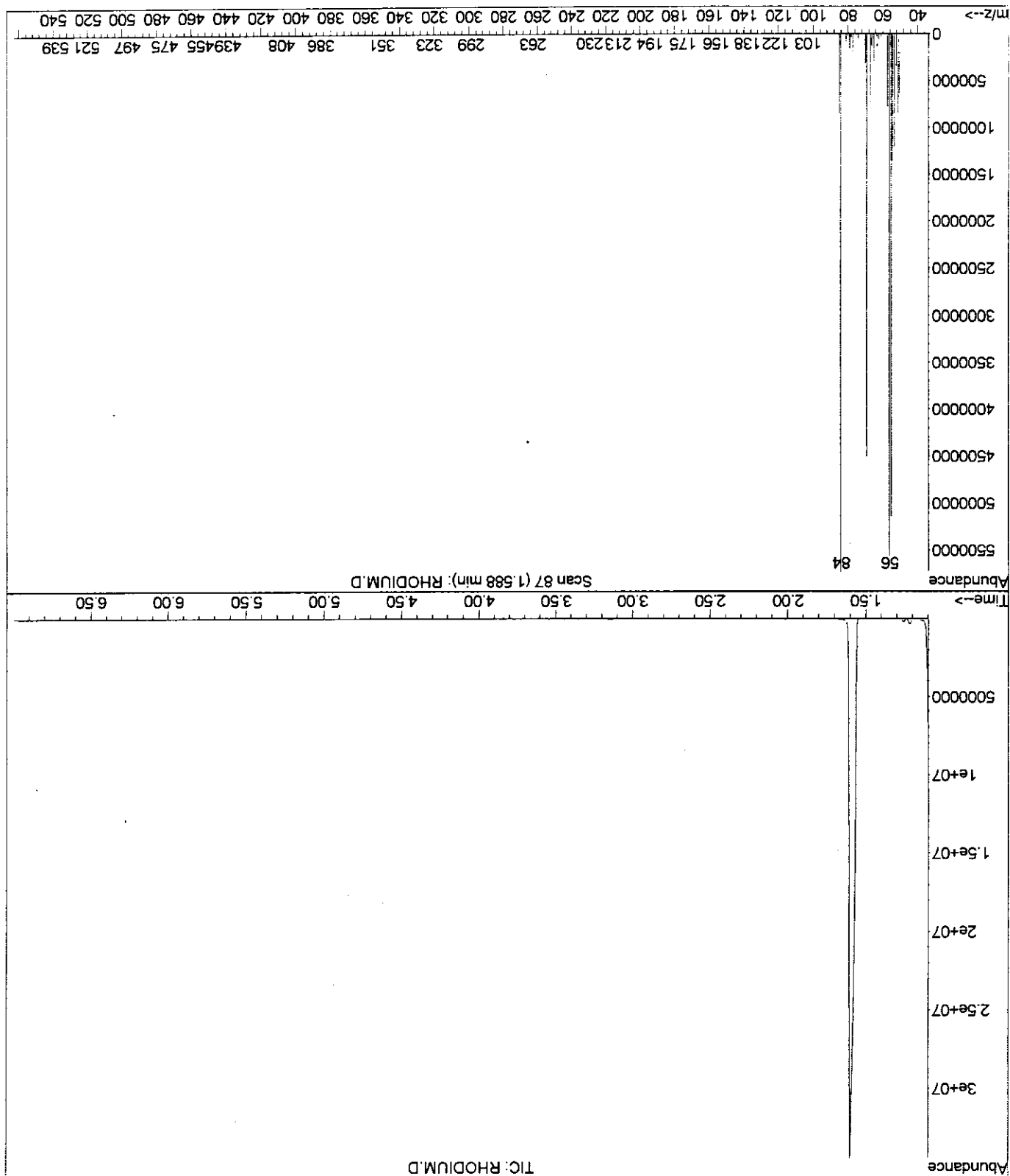
File : C:\HPCHEM\1\DATA\CHEM1140\1-HEXENE.D
Operator : pw
Acquired : 8 Feb 2005 14:43 using AcqMethod 1140_RH
Instrument : GC/MS Ins
Sample Name : 1-Hexene
Misc Info :
Vial Number : 1



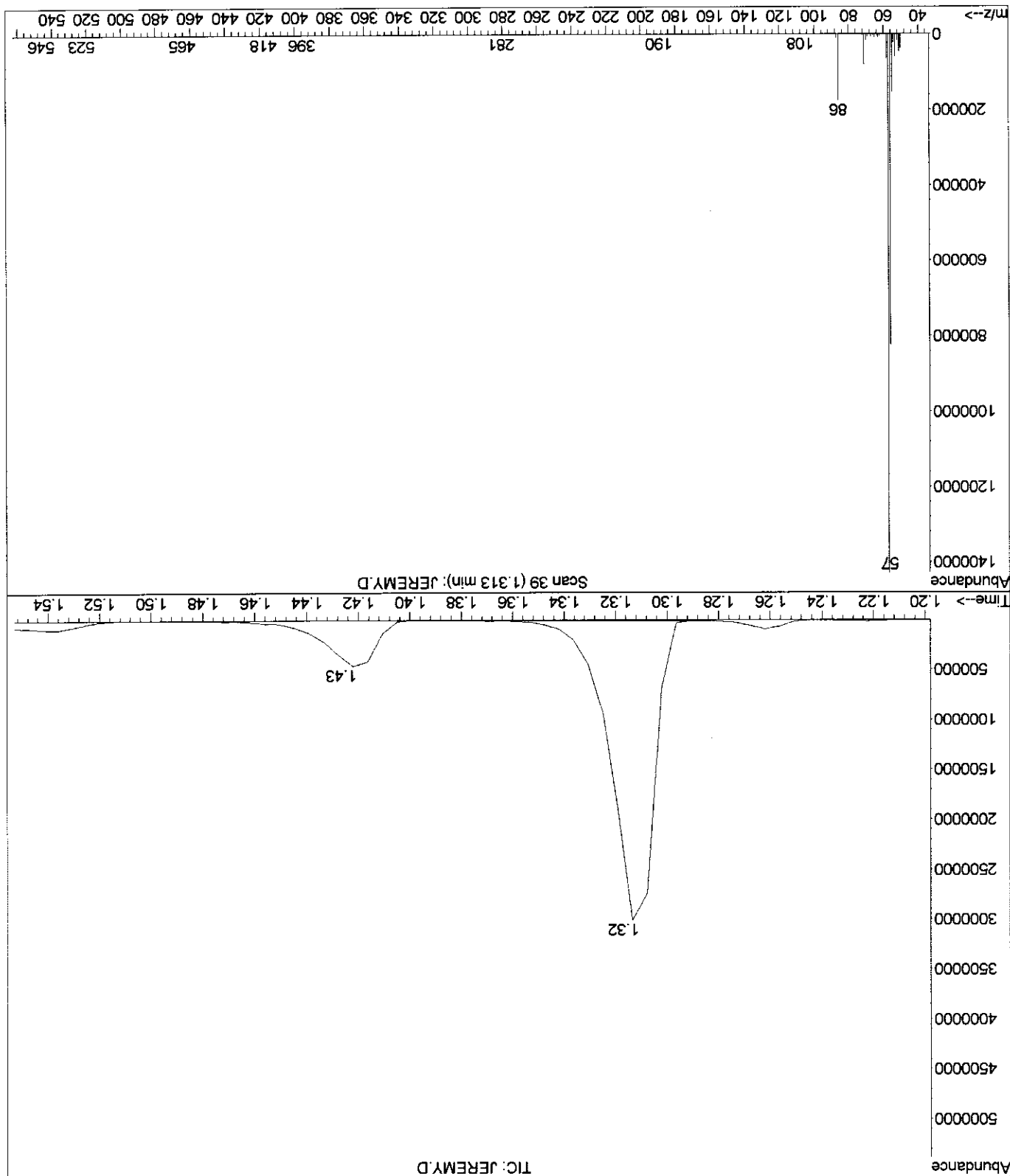
File : C:\HPCHEM\1\DATA\CHEM1140\C_HEXMIX.D
Operator : PM
Acquired : 3 Feb 2005 10:10 using AcqMethod 1140.RH
Instrument : GC/MS Ins
Sample Name: cyclohexene and cyclohexane
Misc Info :
Vial Number: 1



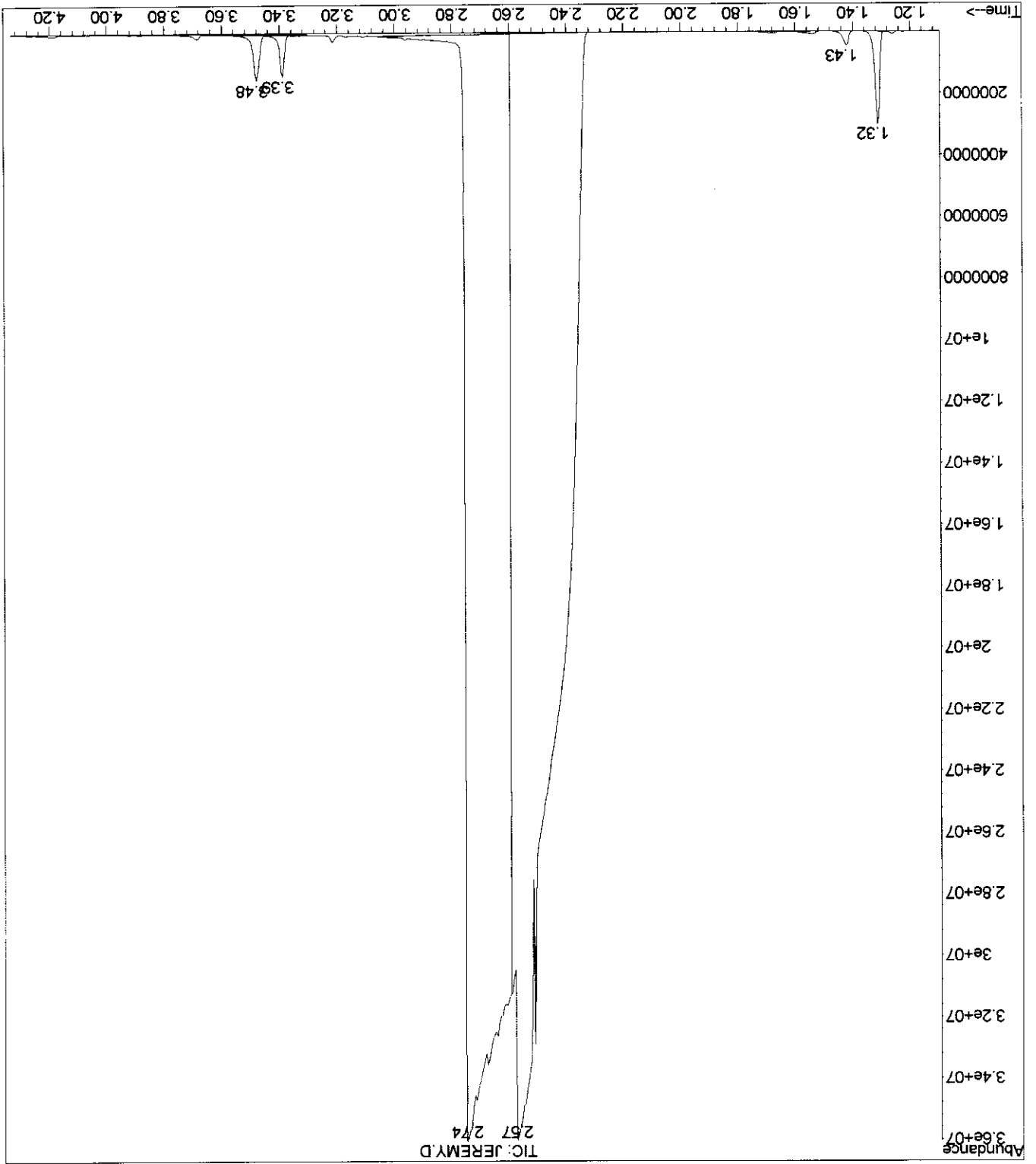
File : C:\HPCHEM\1\DATA\CHEM1140\C_HEXENE.D
Operator : PW
Acquired : 3 Feb 2005 9:59 using AcqMethod 1140_RH
Instrument : GC/MS Ins
Sample Name: cyclohexene
Misc Info :
Vial Number: 1



File : C:\HPCHEM\1\DATA\CHEM1140\rhodium.D
Operator : PW
Acquired : 3 Feb 2005 9:34 using AcqMethod 1140_RH
Instrument : GC/MS Ins
Sample Name: cyclohexane
Misc Info :
Vial Number: 1

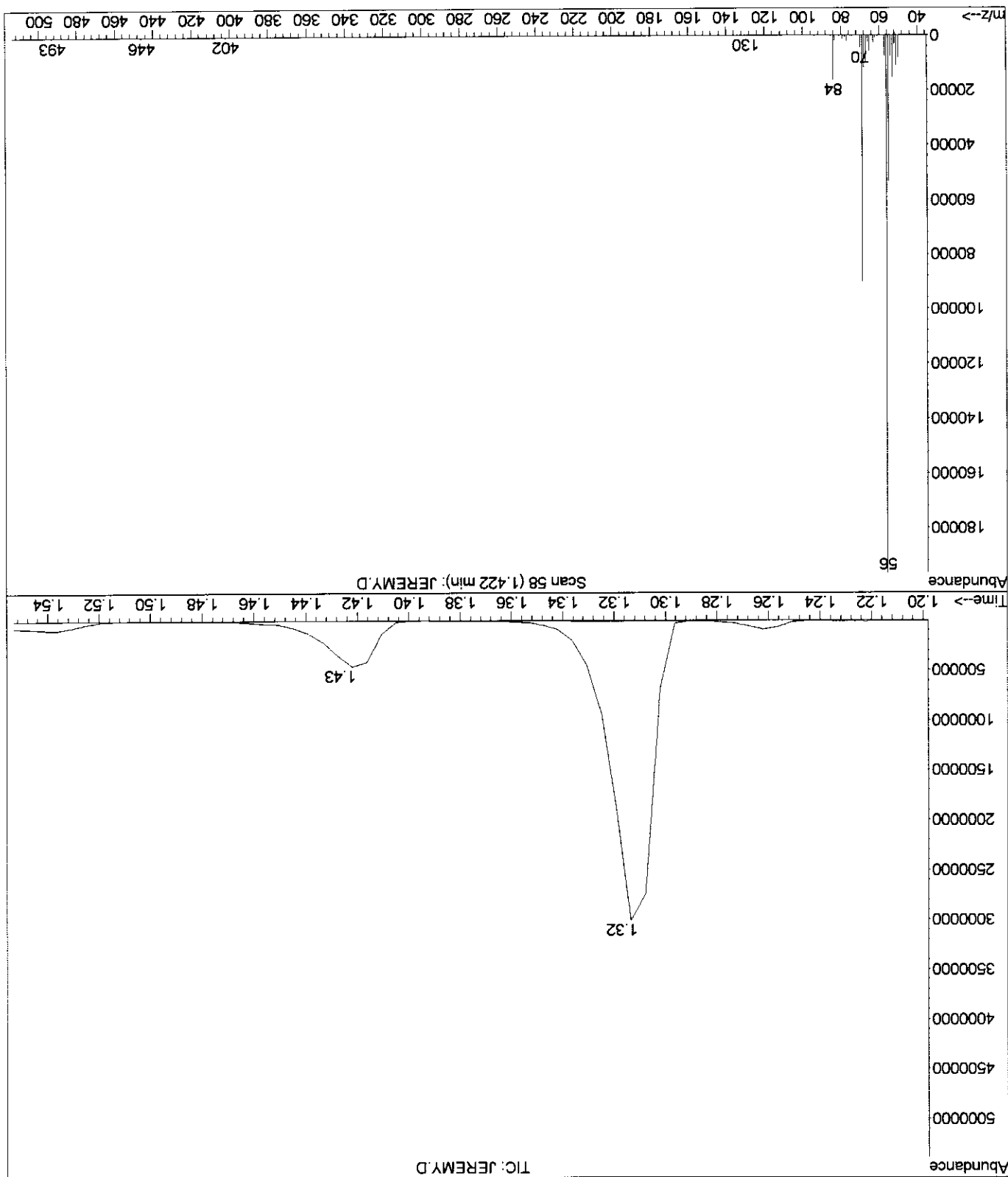


File : C:\HPCHEM\1\DATA\CHEM1140\JEREMY.D
Operator : pw
Acquired : 8 Feb 2005 12:16 using AcqMethod 1140.RH
Instrument : GC/MS Ins
Sample Name: hydrogenation mixtures
Misc Info :
Vial Number: 1



Area Percent Report

Data File : C:\HPCHEM\1\DATA\CHEM1140\JEREMY.D
 Acq On : 8 Feb 2005 12:16
 Sample : **Hydrogenator mixture**
 Misc :
 MS Integration Params: autoint1.e
 Method : C:\HPCHEM\1\METHODS\CITRUS.M (Chemstation Integrator)
 Title :
 Vial: 1
 Operator: pw
 Inst : GC/MS Ins
 Multiplr: 1.00
 Sample Amount: 0.00



File : C:\HPCHEM\1\DATA\CHEM1140\JEREMY.D
Operator : pw
Acquired : 8 Feb 2005 12:16 using AcqMethod 1140_RH
Instrument : GC/MS Ins
Sample Name : hydrogen mixture
Misc Info :
Vial Number : 1

Area Percent Report

Data File : C:\HPCHEM\1\DATA\CHEM1140\JEREMY.D
 Acq On : 8 Feb 2005 12:16
 Sample : *hydrocarbon mixture*
 Misc :
 MS Integration Params: autoint1.e
 Operator: pw
 Inst : GC/MS Ins
 Multiplr: 1.00
 Sample Amount: 0.00

Method : C:\HPCHEM\1\METHODS\CITRUS.M (Chemstation Integrator)
 Title :

Signal : TIC

Peak #	R.T. min	First scan	Max scan	Last scan	PK TY	Peak height	Corr. area	% max. corr.	% of total
1	1.313	33	39	53	BV	2864204	34273496	0.93%	0.486%
2	1.428	53	59	73	PV	434761	6399324	0.17%	0.091%
3	2.565	211	258	264	BV	35515818	3692915916	100.00%	52.396%
4	2.736	264	288	348	VB	35655635	3276373745	88.72%	46.486%
5	3.394	381	403	412	BV	1335086	15293318	0.41%	0.217%
6	3.479	412	418	447	VB	1450281	22779711	0.62%	0.323%

Sum of corrected areas : 7048035509

JEREMY.D CITRUS.M Tue Feb 08 12:21:34 2005