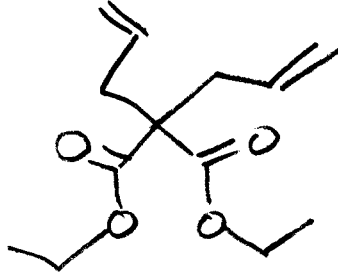
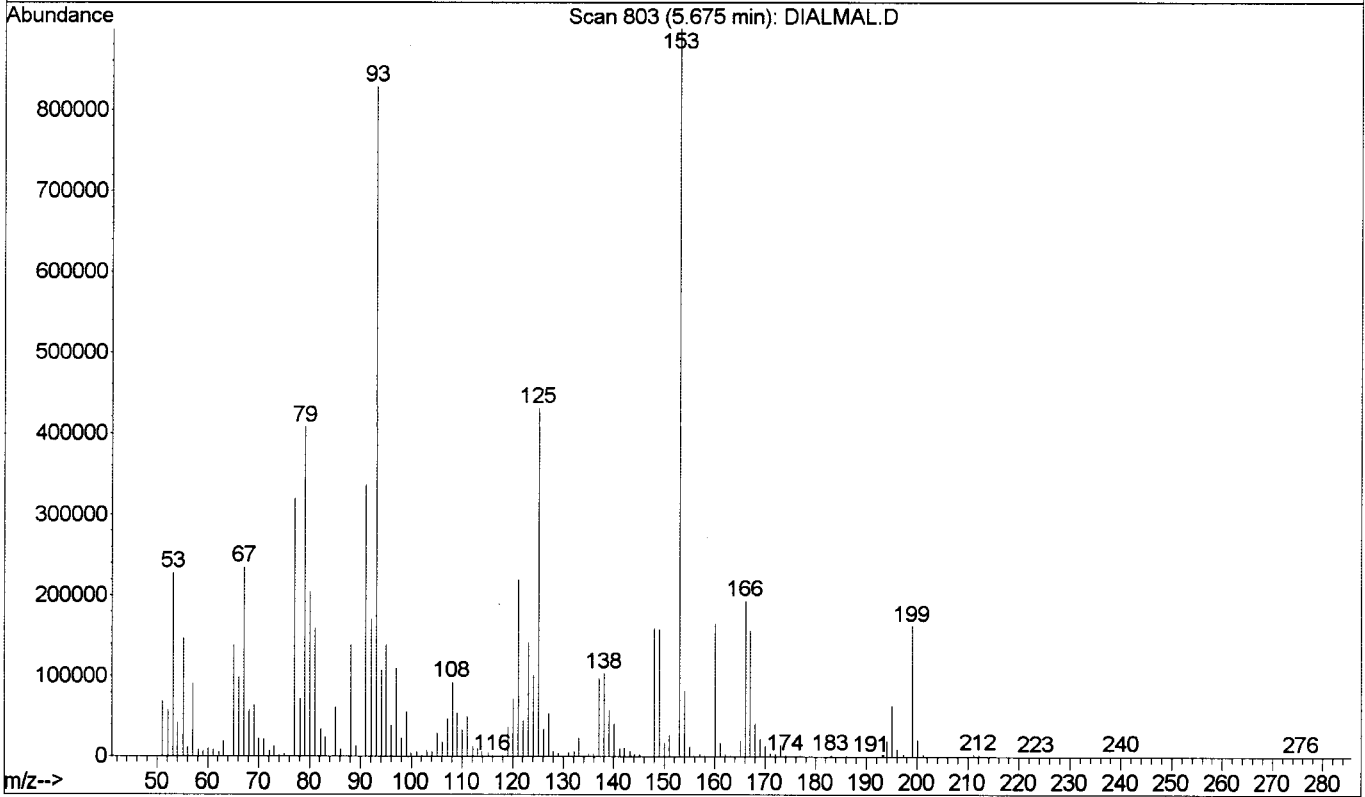
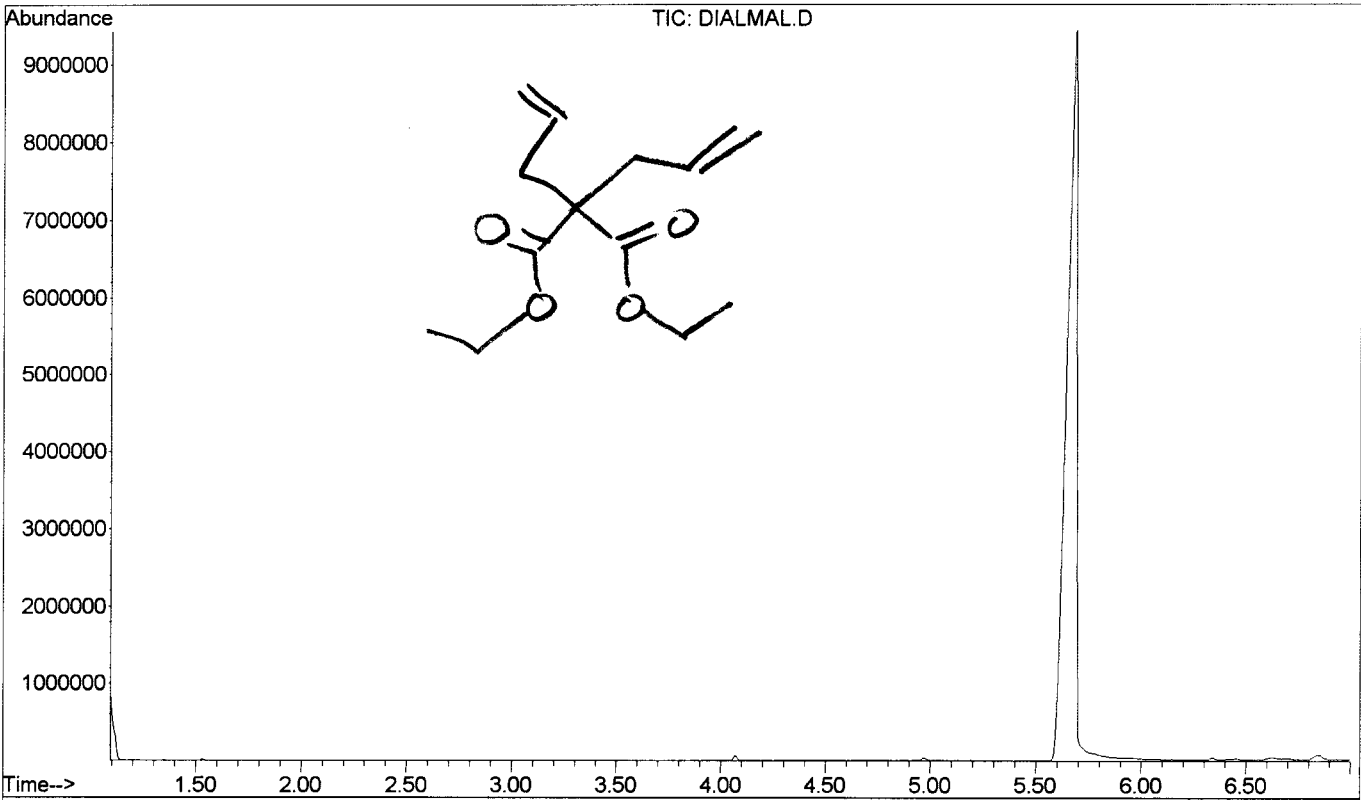
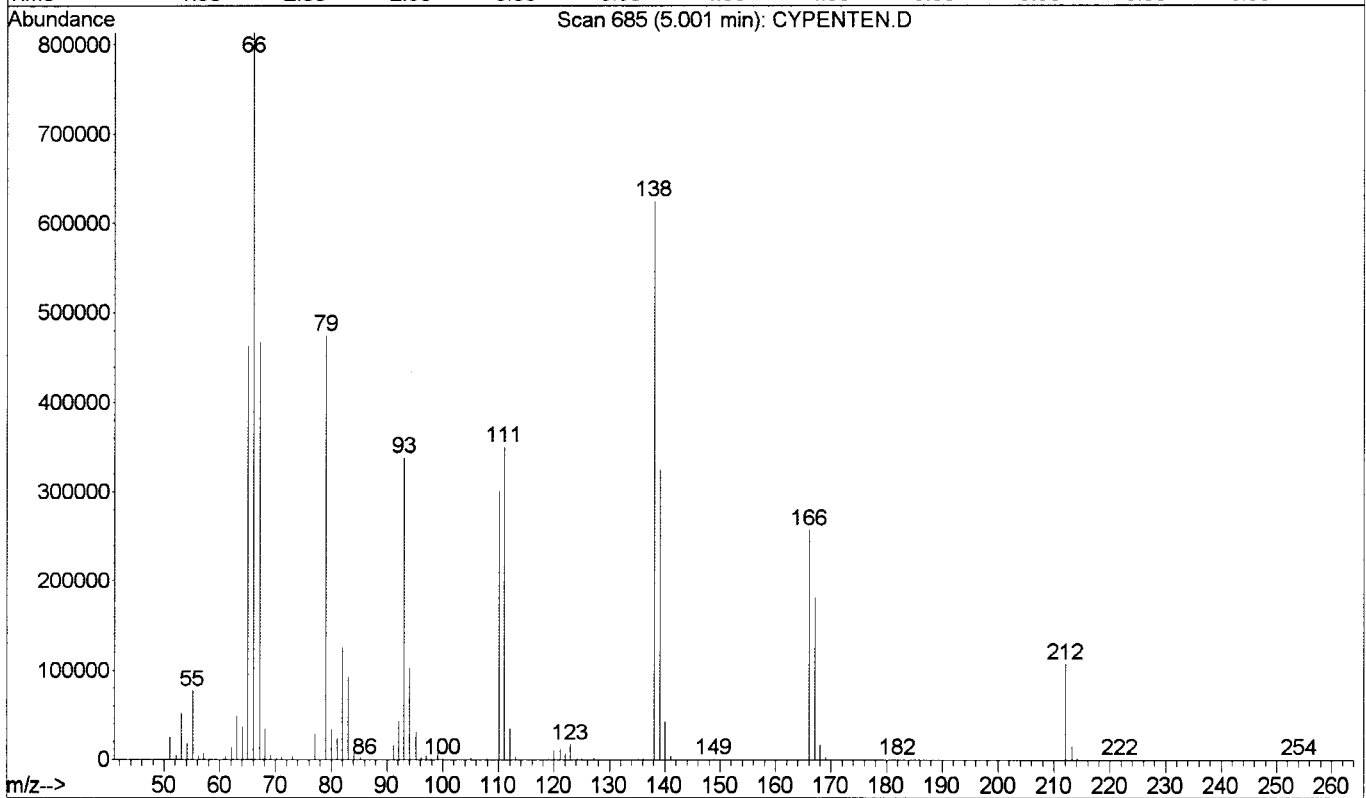
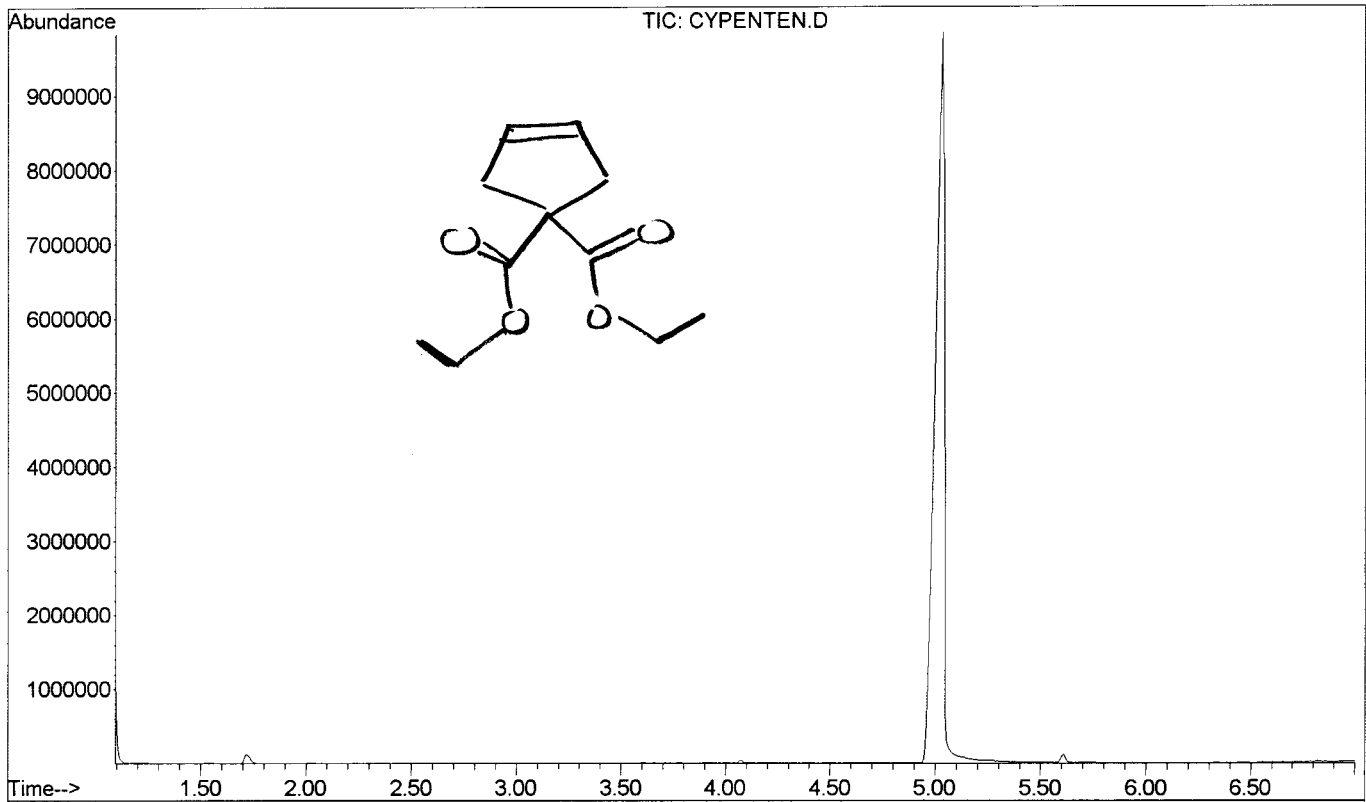


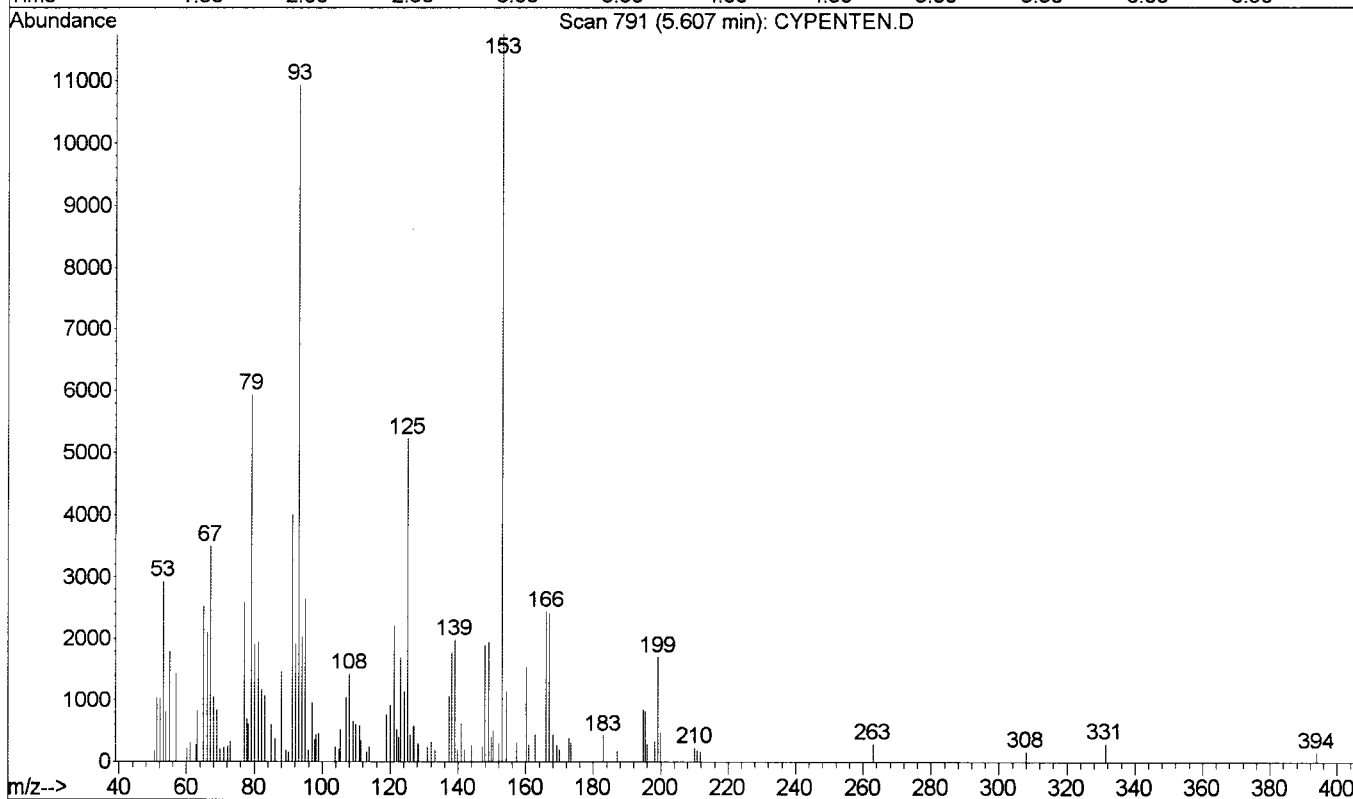
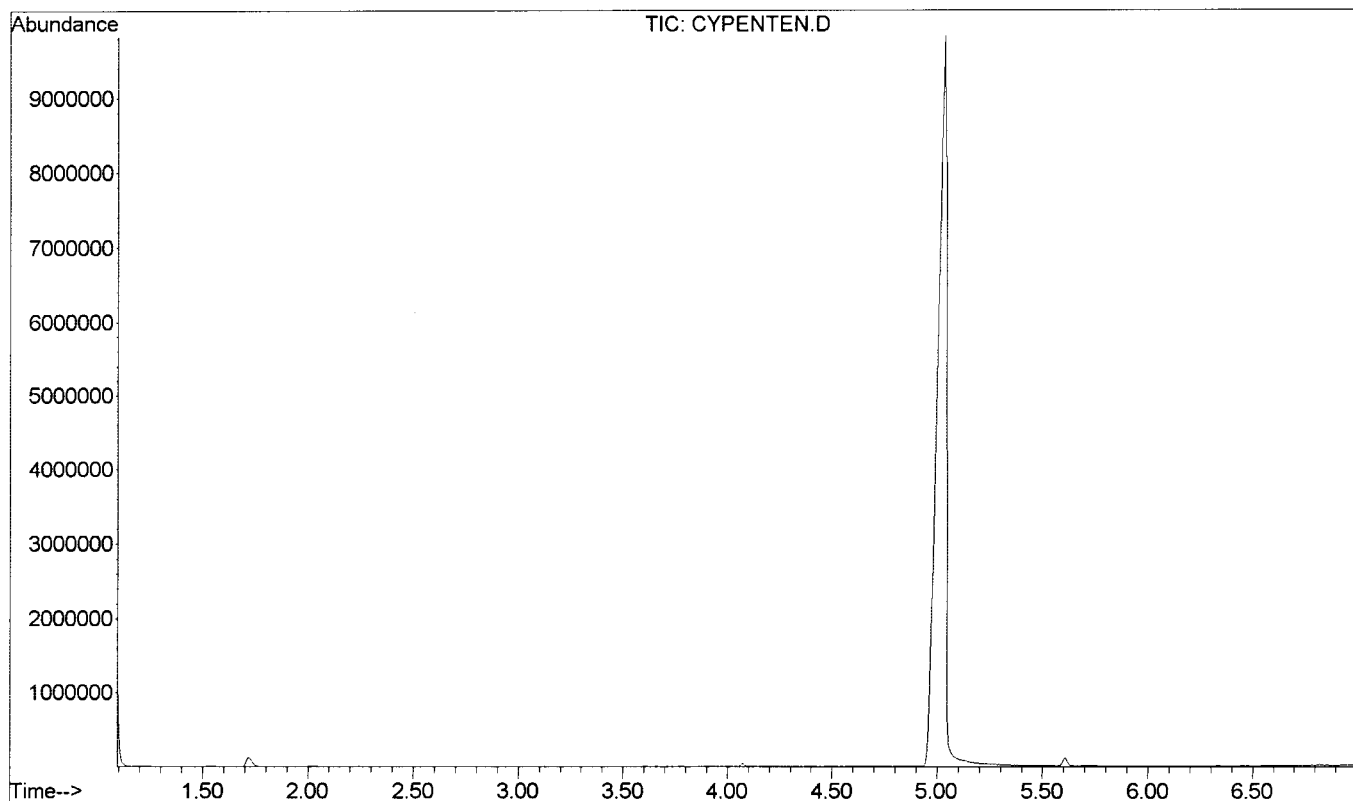
File : C:\HPCHEM\1\DATA\CHEM1140\DIALMAL.D
Operator : PW
Acquired : 22 Feb 2005 9:29 using AcqMethod 1140_RU
Instrument : GC/MS Ins
Sample Name :
Misc Info :
Vial Number: 1



File : C:\HPCHEM\1\DATA\CHEM1140\CYPENTEN.D
Operator : PW
Acquired : 22 Feb 2005 9:41 using AcqMethod 1140_RU
Instrument : GC/MS Ins
Sample Name:
Misc Info :
Vial Number: 1



File : C:\HPCHEM\1\DATA\CHEM1140\CYPENTEN.D
Operator : PW
Acquired : 22 Feb 2005 9:41 using AcqMethod 1140_RU
Instrument : GC/MS Ins
Sample Name:
Misc Info :
Vial Number: 1



Area Percent Report

Data File : C:\HPCHEM\1\DATA\CHEM1140\CYPENTEN.D
 Acq On : 22 Feb 2005 9:41
 Sample :
 Misc :

Vial: 1
 Operator: PW
 Inst : GC/MS Ins
 Multiplr: 1.00
 Sample Amount: 0.00

MS Integration Params: rteint.p

Method : C:\HPCHEM\1\METHODS\CITRUS.M (RTE Integrator)
 Title :
 Smoothing : ON Filtering: 5
 Sampling : 1 Min Area: 0.1 % of largest Peak
 Start Thrs: 0.05 Max Peaks: 100
 Stop Thrs : 0 Peak Location: TOP

If leading or trailing edge < 100 prefer < Baseline drop else tangent >
 Peak separation: 5

Signal : TIC

peak #	R.T. min	first scan	max scan	last scan	PK TY	peak height	corr. area	corr. % max.	% of total
1	1.716	105	110	119	rBV2	116728	228531	0.76%	0.750%
2	4.076	515	523	529	rBV3	33835	52679	0.18%	0.173%
3	5.036	672	691	735	rBV	9830630	29989743	100.00%	98.472%
4	5.607	784	791	799	rVB2	116768	184057	0.61%	0.604%

Sum of corrected areas: 30455010

CYPENTEN.D CITRUS.M Tue Feb 22 09:50:46 2005